

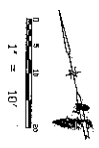


# CONDOMINIUM MAP

## OF THE FORNELL

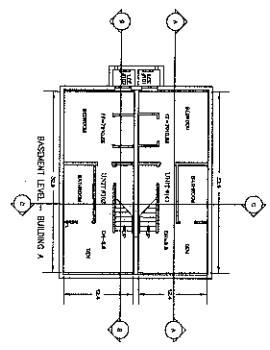
### BUILDING "A"

BBS P18

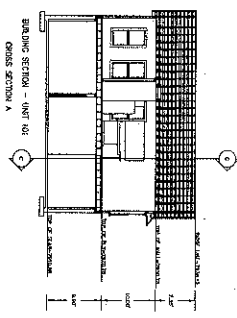
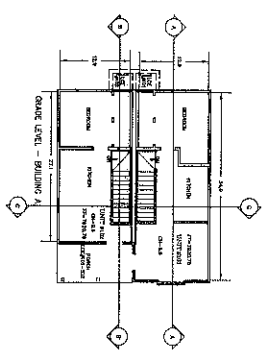


**LEGEND**

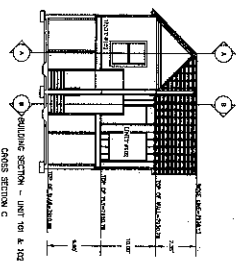
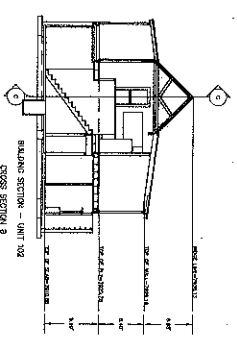
- LOCATED COMMON ELEMENT
- OCCUPY COMMON ELEMENT
- RESERVED FLOOR FOR ELEVATOR OR CONCRETE ELEVATOR
- RESERVED WALL



PLAN VIEW



SECTION VIEW



Robert W. BBS  
Professional Engineer  
No. 18468  
State of Colorado

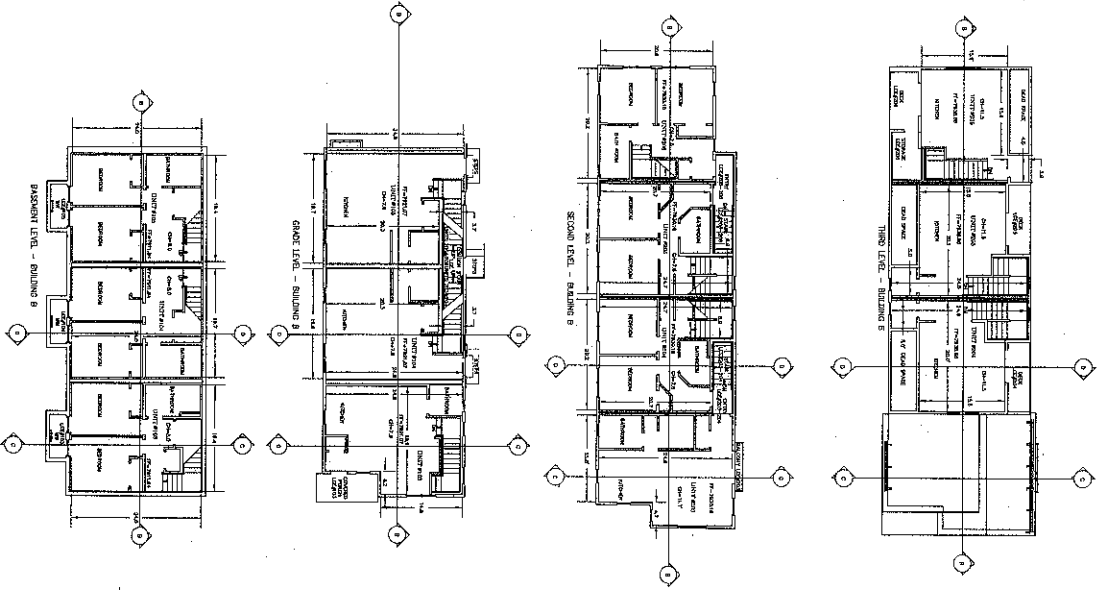
This document is the property of BBS & Associates, Inc. It is to be used only for the project and location specified herein. It is not to be reproduced, stored in a retrieval system, or transmitted in any form or by any means, electronic, mechanical, photocopying, recording, or by any information storage and retrieval system, without the prior written permission of BBS & Associates, Inc.

SHEET 2 OF 4

**Side PM**

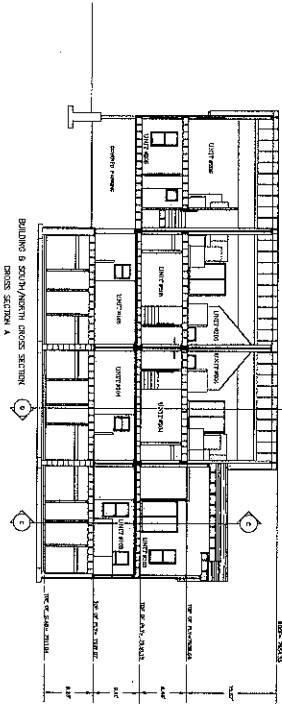
# CONDOMINIUM MAP OF THE FORNELL

## PLAN VIEW



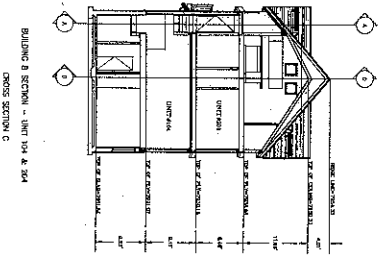
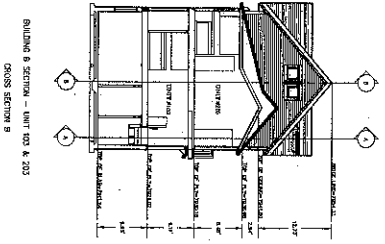
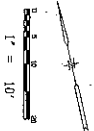
## BUILDING "B"

## SECTION VIEW



### LEGEND

- UNREINFORCED CONCRETE
- REINFORCED CONCRETE
- ▨ PRECAST CONCRETE
- ▧ STRUCTURAL STEEL
- ▩ WINDOW



**SHREVE & SMITH**  
ARCHITECTS  
1111 N. W. 10th Street  
Fort Lauderdale, Florida 33304  
Phone: (305) 555-1111  
Fax: (305) 555-1112  
www.shreve-smith.com

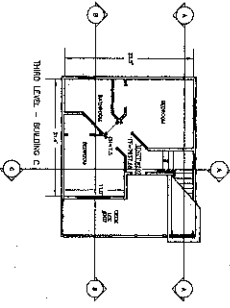
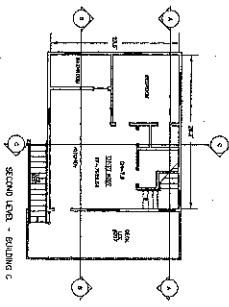
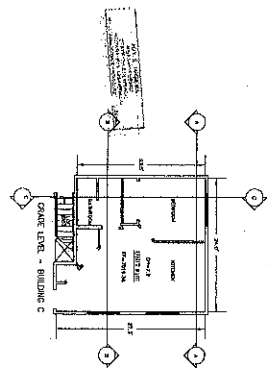
**SHEET 1 OF 4**

B108 P20

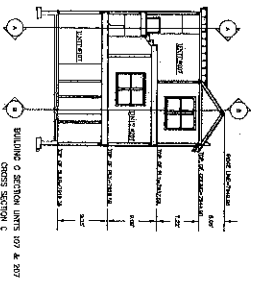
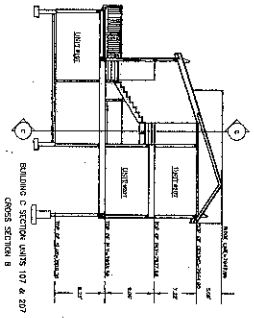
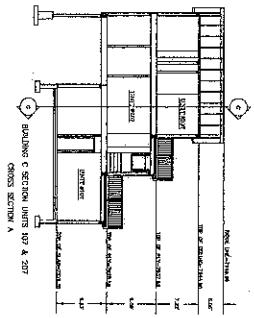
# CONDOMINIUM MAP OF THE FORNELL

## BUILDING "C"

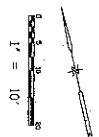
### PLAN VIEW



### SECTION VIEW



**LEGEND**  
 UNFINISHED CONCRETE SLAB  
 OCCUPANCY CONCRETE SLAB  
 FINISHED FLOOR FINISH OR PARTIAL OR COMPLETE CEILING  
 CHANGING ROOM



**SHURT & OF A**  
 ENGINEERS  
 11111 N. W. 11th Street, Suite 100, Coral Gables, FL 33134  
 Phone: (305) 444-1111  
 Fax: (305) 444-1112  
 www.shurtandof.com