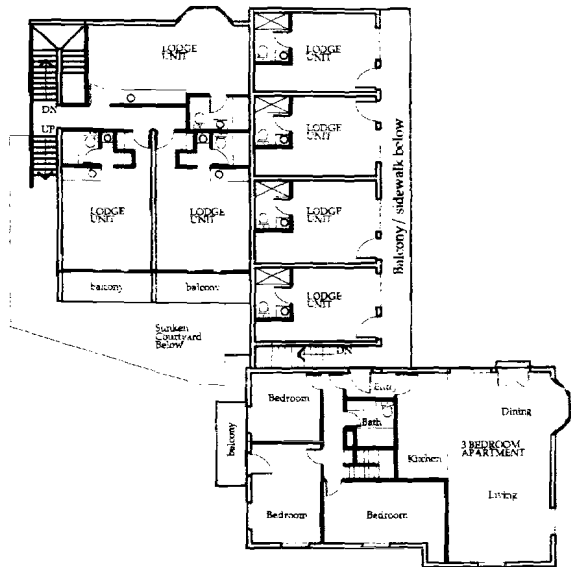
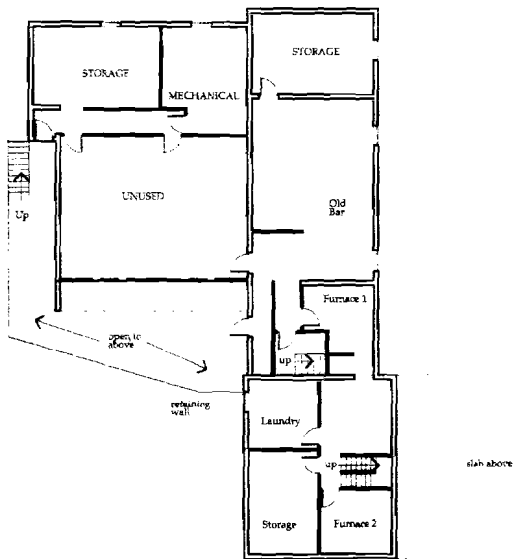


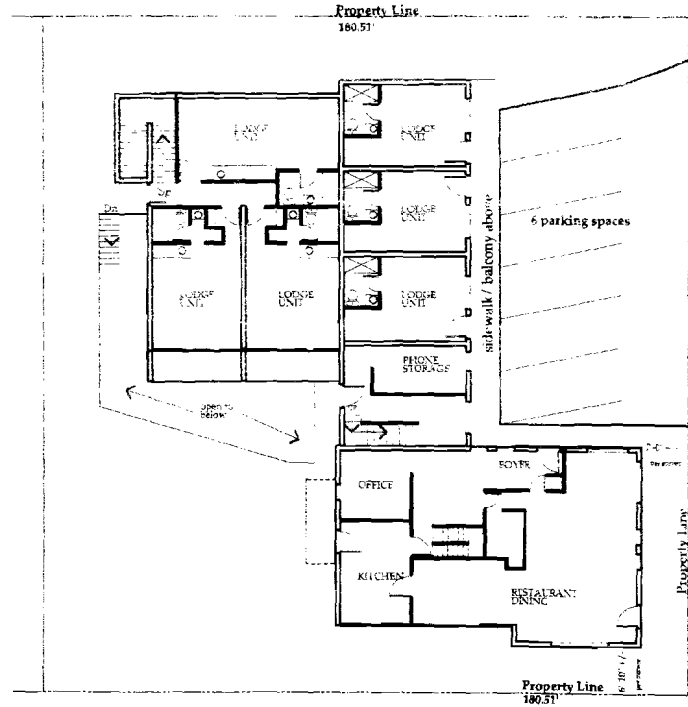
B.63 P.20F



Upper Level Plan



Lower Level Plan



Main Floor and Site Plan

7TH ST.

**Bavarian Inn
Affordable
Housing**

ASPEN, COLORADO

OWNER:

Bavarian Affordable Housing, LLC
c/o Four Peaks Development, LLC
1000 S. MILL Aspen, CO 81611 925-2334

DATE: ISSUE:

December 2011 Final, PLD Development Plan



NORTH

SCALE: 1"=8'-0"

Existing
Bavarian Inn
Floor Plans



A 0.1

B.63 P.20G

Bavarian Inn Affordable Housing
 ASPEN, COLORADO

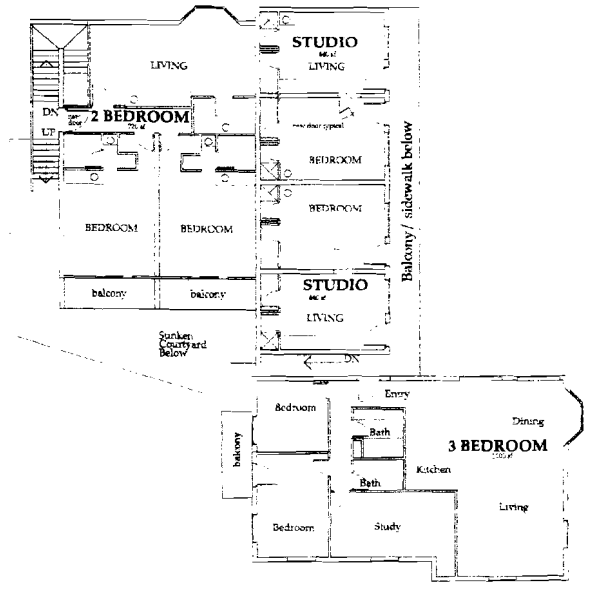
OWNER:
 Bavarian Affordable Housing, LLC
 c/o Four Peaks Development, LLC
 1000 S. Mill
 Aspen, CO
 970-925-2114

DATE: 1866
 December 2001 Final PCD
 Development Plan

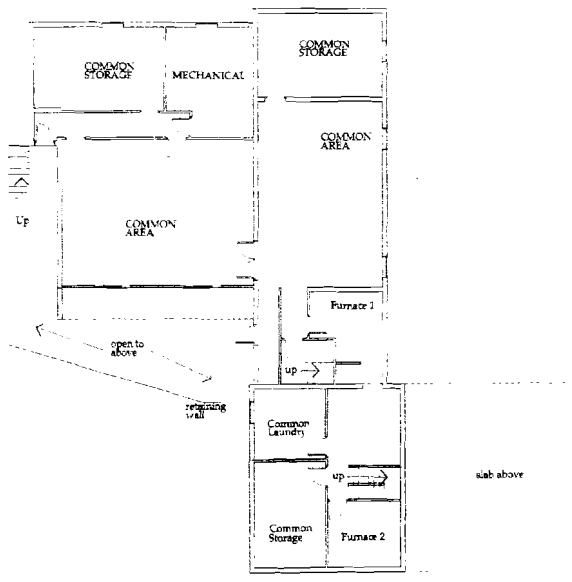
SCALE 1"=8'-0"

Remodel Bavarian Inn Floor Plans

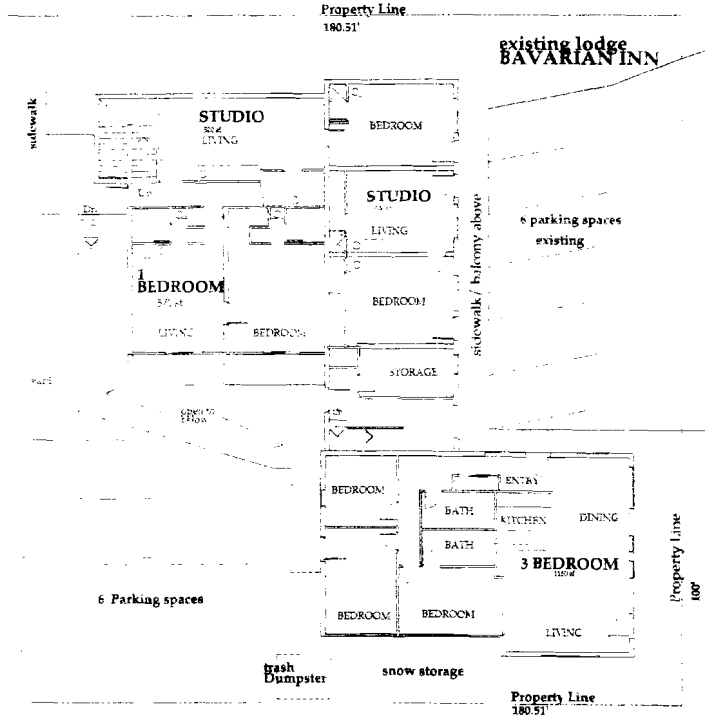
A0.2



Upper Level Plan



Lower Level Plan



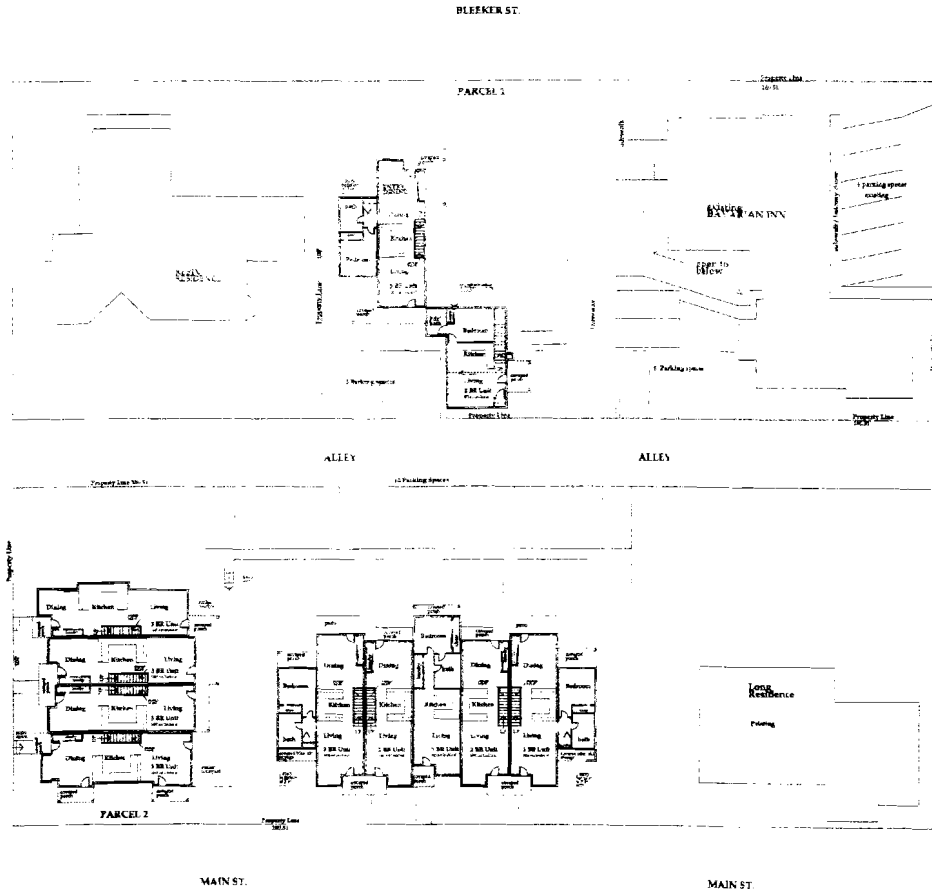
Main Level Plan

Notes:

1. All finish areas shall be done consistent with Farm Series.
2. Section 1A of the 2002 Aspen-Pitkin County Housing Guidelines for deed-restricted existing dwellings shall apply.
3. Modifications shall be made as required to conform with accessibility regulations.



B.63 P.20H



Bavarian Inn Affordable Housing

ASPEN, COLORADO
OWNER: Bavarian Affordable Housing, LLC
c/o Four Peaks Development, LLC
1800 S. MILL
ASPEN, CO
925-2114

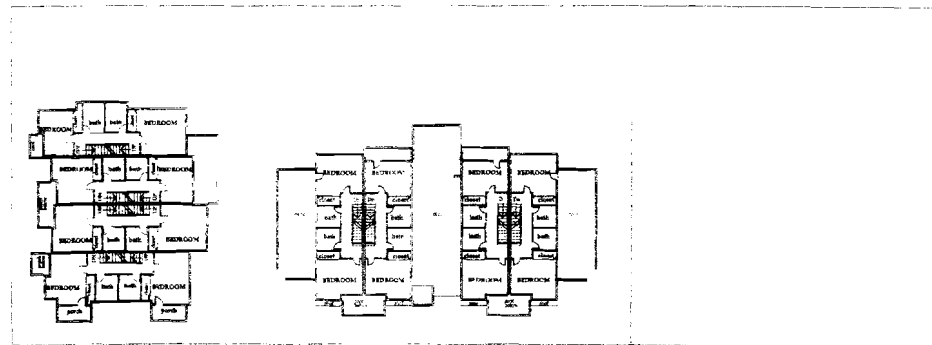
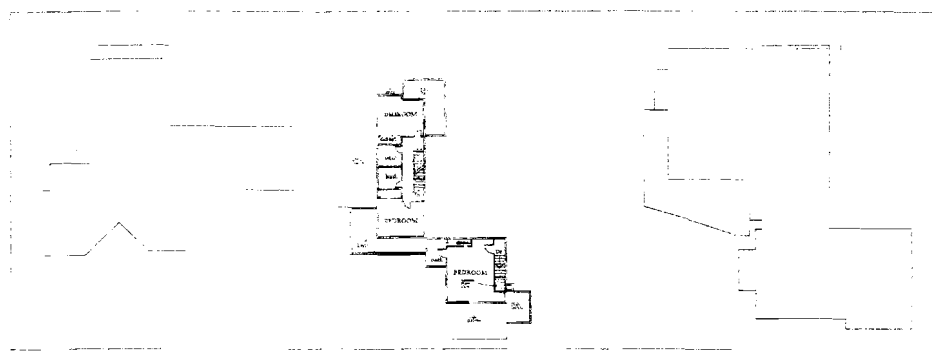
DATE: 188UE
December 2001 Final PUD
Development Plan

SCALE 1/8"=1'-0"
MAIN LEVEL FLOOR PLAN

A 1.1



B.43 P.20I



**Bavarian Inn
Affordable
Housing**
ARPEN COLORADO

OWNER:
Bavarian Affordable Housing, LLC
c/o Four Peaks Development, LLC
1000 S. Mill
Aspen, CO
925-2114

DATE: December 2001
ISSUE: Final PUD
Development Plan



SCALE: 1"=16'-0"
**2ND
FLOOR PLAN**



A 1.2