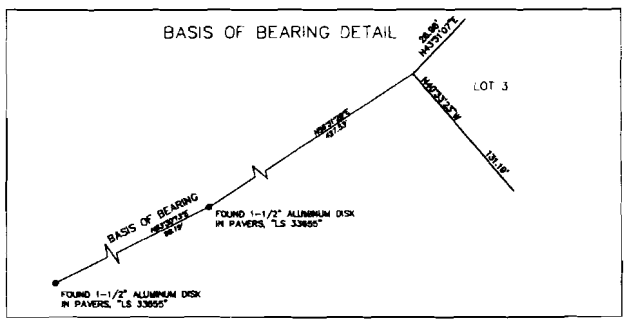
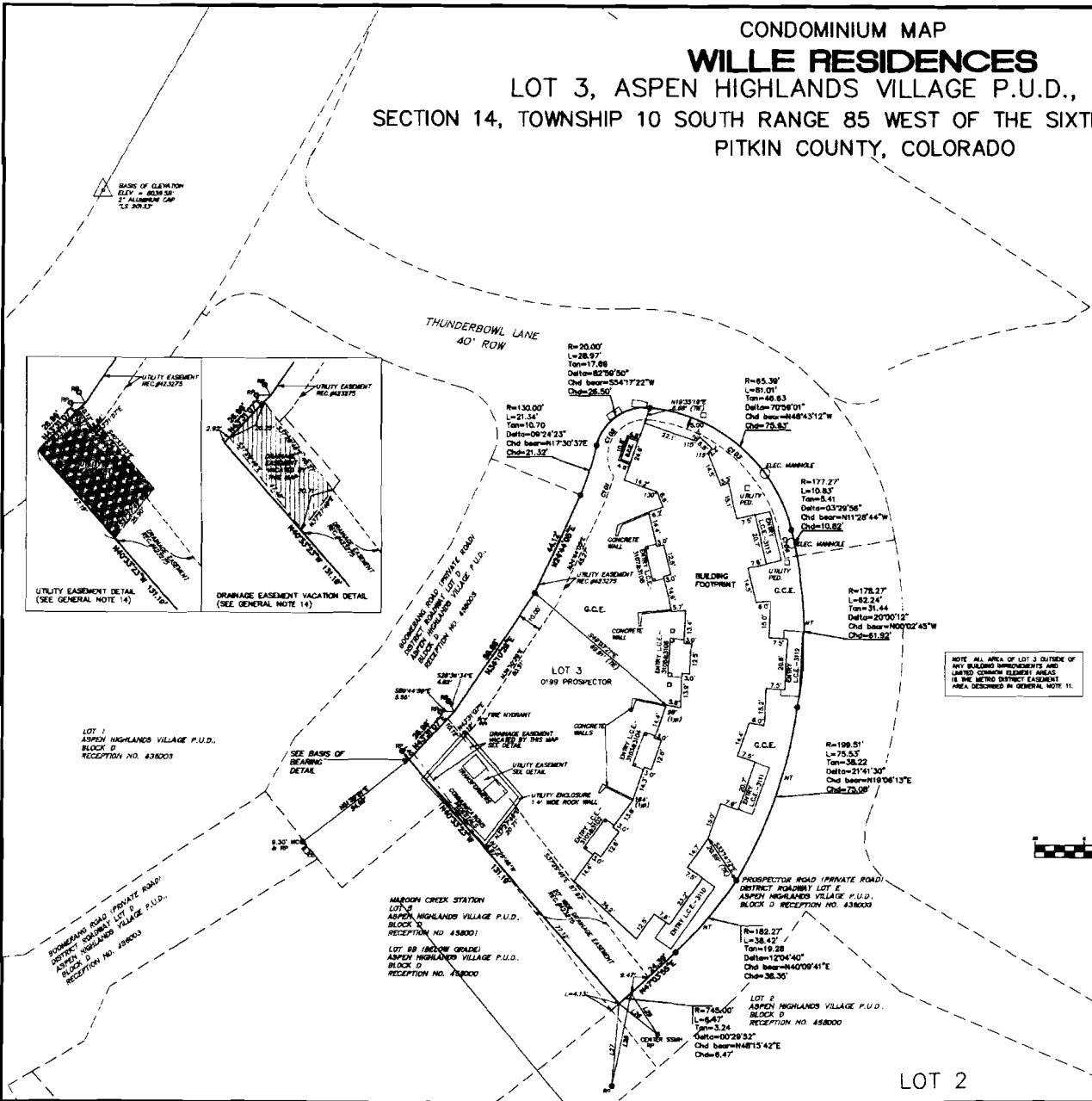


BS9 P.28

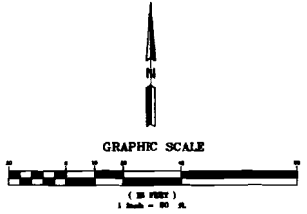
CONDOMINIUM MAP
WILLE RESIDENCES
 LOT 3, ASPEN HIGHLANDS VILLAGE P.U.D., BLOCK D
 SECTION 14, TOWNSHIP 10 SOUTH RANGE 85 WEST OF THE SIXTH PRINCIPAL MERIDIAN
 PITKIN COUNTY, COLORADO



| LINE | LENGTH | BEARING |
|------|--------|-------------|
| L16 | 72.87 | S07°00'00"W |
| L17 | 36.07 | N08°57'27"E |
| L18 | 36.86 | N11°28'02"E |
| L19 | 4.85 | N42°54'30"E |
| L40 | 4.48 | S28°46'27"E |

| CURVE | RADIUS | LENGTH | TANGENT | DELTA | CHD BEAR | CHORD |
|-------|--------|--------|---------|-----------|-------------|-------|
| CHW | 140.00 | 72.87 | 4.48 | 20°00'12" | N11°28'02"E | 72.50 |
| CHB | 13.00 | 10.77 | 31.44 | 3°29'58" | S17°30'37"E | 21.92 |
| CHC | 88.39 | 74.82 | 43.08 | 7°58'01" | N48°45'12"E | 75.83 |
| CHD | 178.27 | 10.83 | 8.28 | 02°00'12" | N00°02'45"W | 10.83 |

NOTE: ALL AREA OF LOT 3 OUTSIDE OF ANY BUILDING IMPROVEMENTS AND LIMITED COMMON ELEMENT AREAS IS THE METRO DISTRICT EASEMENT AREA DESCRIBED IN GENERAL NOTE 11.



- LEGEND**
- FOUND 1-1/2" DISC IN PAVERS 'LS 33889'
 - SET 1/2" REBAR AND 2" ALUMINUM CAP 'LS 33858'
 - △ SET DISC IN CONCRETE 'LS 33883'
 - ▽ W/IRREG CORNER BY REFERENCE POINT
 - ADJACENT LOT EASEMENT
 - - - LOT LINE
 - HT NON-TANGENT CURVE
 - G.C.E. GENERAL COMMON ELEMENT
 - L.C.E. LIMITED COMMON ELEMENT

NOTES:
 1. PERD L.C.E.'S AND ENTRY L.C.E.'S ARE OVERLAPPED ON SHEETS 2-4.
 2. WALL ANGLES ARE 90°, 60° OR 120° UNLESS OTHERWISE INDICATED.



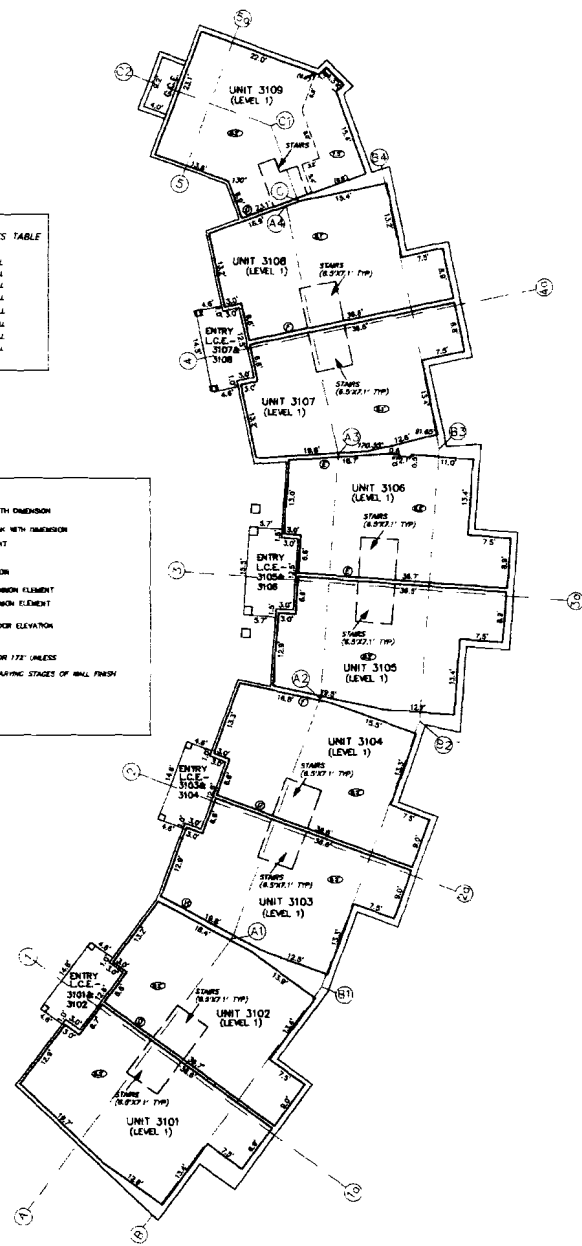
SHEET 2 OF 6

JOB# 3025.3

Z:\ASPHEN\B.D.L. DWG\WILLE RESIDENCES\10-1-01-01-0000-1001.dwg

B79 P.29

CONDOMINIUM MAP
WILLE RESIDENCES
 LOT 3, ASPEN HIGHLANDS VILLAGE P.U.D., BLOCK D
 SECTION 14, TOWNSHIP 10 SOUTH RANGE 85 WEST OF THE SIXTH PRINCIPAL MERIDIAN
 PITKIN COUNTY, COLORADO



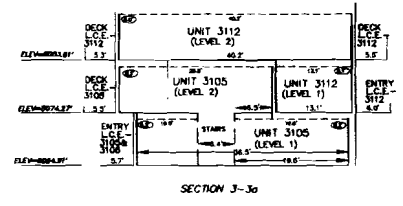
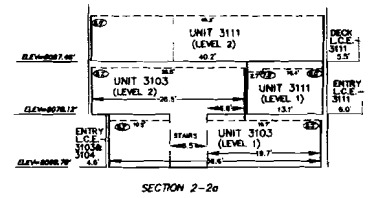
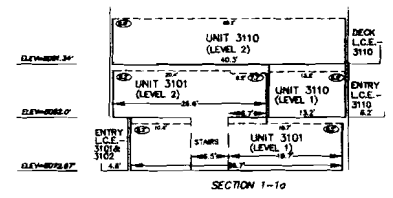
WALL THICKNESS TABLE

| | |
|-----|-----------|
| (A) | 0.5" WALL |
| (B) | 0.5" WALL |
| (C) | 0.5" WALL |
| (D) | 0.5" WALL |
| (E) | 0.5" WALL |
| (F) | 0.5" WALL |
| (G) | 0.5" WALL |
| (H) | 0.5" WALL |
| (I) | 0.5" WALL |
| (J) | 0.5" WALL |
| (K) | 0.5" WALL |
| (L) | 0.5" WALL |
| (M) | 0.5" WALL |
| (N) | 0.5" WALL |
| (O) | 0.5" WALL |
| (P) | 0.5" WALL |
| (Q) | 0.5" WALL |
| (R) | 0.5" WALL |
| (S) | 0.5" WALL |

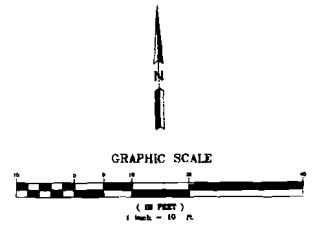
LEGEND

- UNIT WALL WITH DIMENSION
- CEILING BREAK WITH DIMENSION
- (E) CEILING HEIGHT
- (S) UNIT STAIRS
- CROSS SECTION
- G.C.E. GENERAL COMMON ELEMENT
- L.C.E. LIMITED COMMON ELEMENT
- ELEVATION: F. FINISHED FLOOR ELEVATION

NOTES:
 1. WALL ANGLES ARE 90°, 180° OR 270° UNLESS OTHERWISE INDICATED.
 2. UNITS HERE MEASURED IN FINISHED STAGES OF WALL FINISH.



461679
 Page: 3 of 6
 12/11/2003 03:00
 4 00 00 3 0 00



LEVEL 1 AND SECTIONS
 1-1A, 2-2A, & 3-3A



ALPINE AET
 ENGINEERING INC.
 470 520-3112 • FAX 520-386-386

SHEET
 3 OF 6

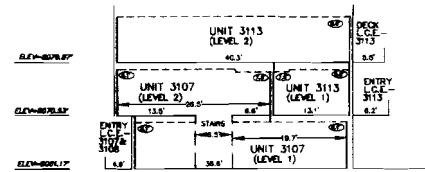
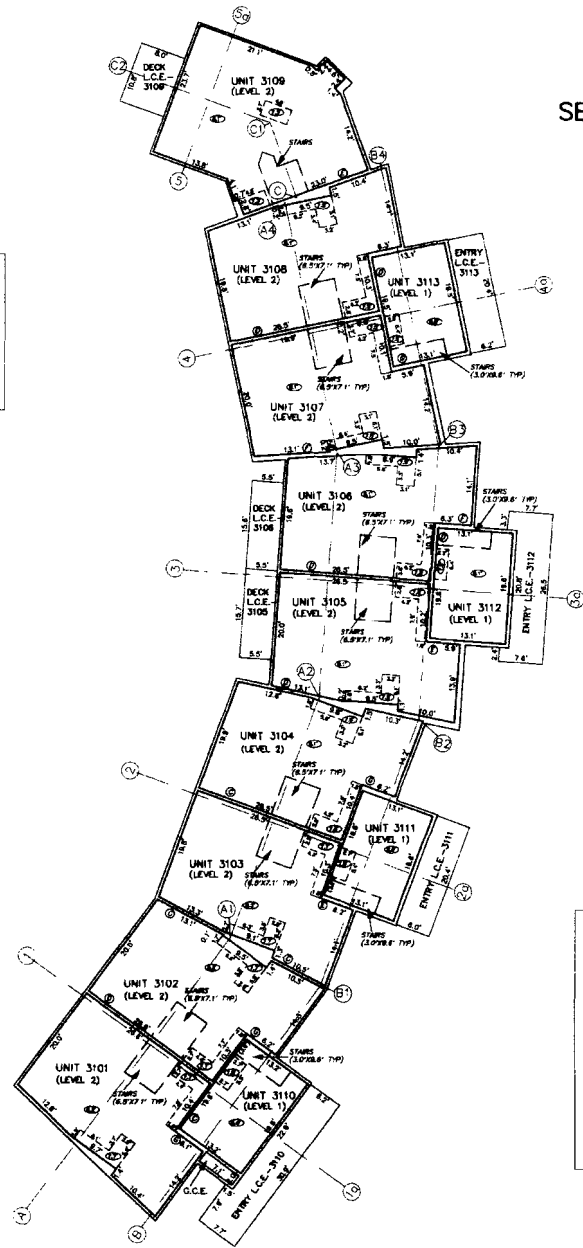
JOB# 3025.3

B.29 P.30

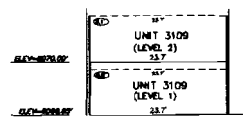
CONDOMINIUM MAP
WILLE RESIDENCES
 LOT 3, ASPEN HIGHLANDS VILLAGE P.U.D., BLOCK D
 SECTION 14, TOWNSHIP 10 SOUTH RANGE 85 WEST OF THE SIXTH PRINCIPAL MERIDIAN
 PITKIN COUNTY, COLORADO

WALL THICKNESS TABLE

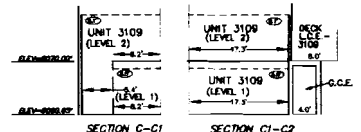
| | |
|---|-----------|
| ① | 0.5" WALL |
| ② | 0.6" WALL |
| ③ | 0.8" WALL |
| ④ | 0.8" WALL |
| ⑤ | 0.8" WALL |
| ⑥ | 0.8" WALL |
| ⑦ | 0.8" WALL |
| ⑧ | 1.0" WALL |



SECTION 4-4a



SECTION 5-5a



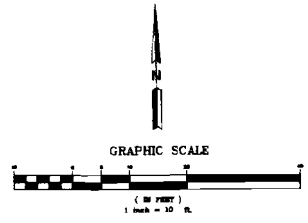
SECTION C-1

SECTION C-1-C2

LEGEND

| | |
|------------------|--------------------------|
| — 0.5" — | 0.5" WALL WITH DIMENSION |
| — 0.6" — | 0.6" WALL WITH DIMENSION |
| — 0.8" — | 0.8" WALL WITH DIMENSION |
| — 1.0" — | 1.0" WALL WITH DIMENSION |
| — 8.971' — | CEILING HEIGHT |
| — 8.971' TYP — | UNIT STAIRS |
| — 8.971' TYP — | CROSS SECTION |
| — G.C.E. — | GENERAL COMMON ELEMENT |
| — L.C.E. — | LIMITED COMMON ELEMENT |
| — ELEV=808.17' — | FINISHED FLOOR ELEVATION |

NOTES:
 1. WALL ANGLES ARE 90, 135 OR 137 UNLESS OTHERWISE INDICATED.
 2. UNITS WERE MEASURED BY TAPPING STAGES OF WALL FINISH.



LEVEL 2 AND SECTIONS
 4-4A, 5-5A AND C-1-C2



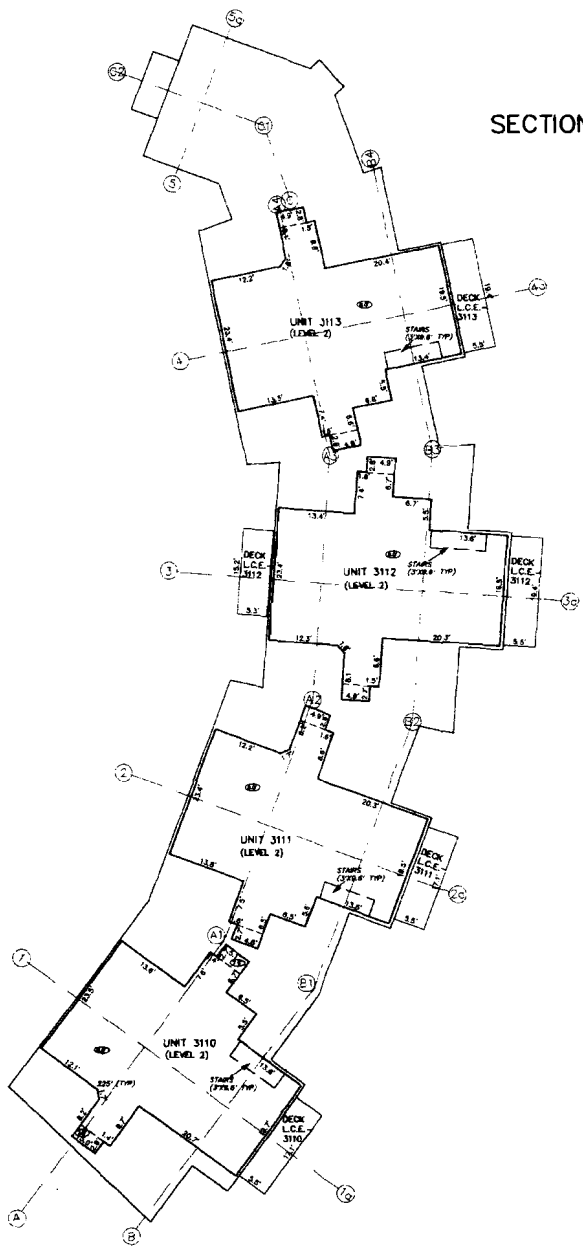
ALPINE
ENGINEERING INC.
 ENGINEERING OFFICE: 2200 N. W. 10TH ST., SUITE 100
 BOULDER, COLORADO 80502
 • 303 440-3332 • FAX 303-440-3330

SHEET
 4 OF 6

JOB# 3025.3

D-59 P-31

CONDOMINIUM MAP
WILLE RESIDENCES
 LOT 3, ASPEN HIGHLANDS VILLAGE P.U.D., BLOCK D
 SECTION 14, TOWNSHIP 10 SOUTH RANGE 85 WEST OF THE SIXTH PRINCIPAL MERIDIAN
 PITKIN COUNTY, COLORADO



LEGEND

- 0.7' — UNIT WALL WITH DIMENSION
- 0.4' — CEILING BREAK WITH DIMENSION
- ⊕ — CEILING HEIGHT
- ⊕ — UNIT SHAPE
- — — — — CROSS SECTION
- G.C.E. — GENERAL COMMON ELEMENT
- L.C.E. — LIMITED COMMON ELEMENT
- ELEVATION 11' — FINISHED FLOOR ELEVATION

NOTES:
 1. ON LEVEL 3 WALL ANGLES ARE 90° OR 720° UNLESS OTHERWISE INDICATED.
 2. DIM'S WERE MEASURED IN VARIOUS STAGES OF WALL FINISH.

461679
 Page 14 of 8
 12/15/2001 03:44
 0 0 00 0 0 00

GRAPHIC SCALE
 (IN FEET)
 1 inch = 10 ft

LEVEL 3

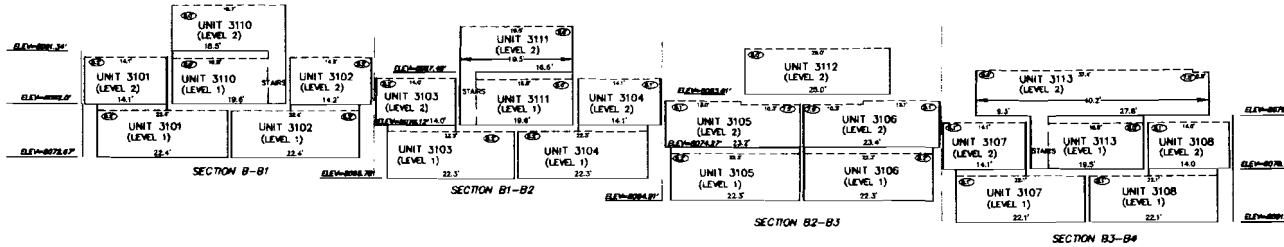
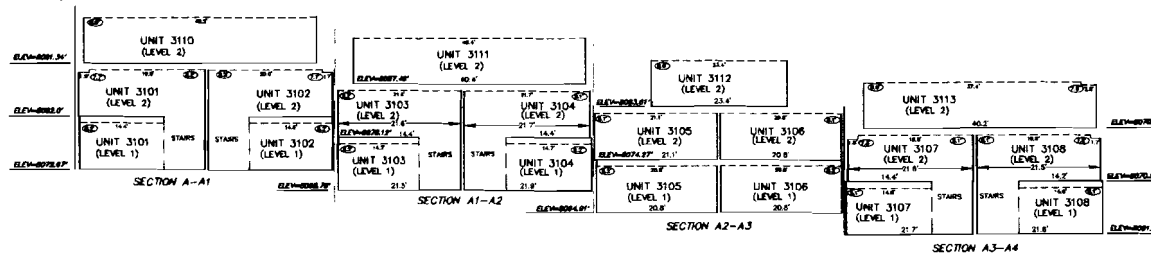
ALPINE AET ENGINEERING INC.
 ENGINEERING INC.
 1000 10th St. Suite 100
 Aspen, CO 81602
 Phone: 970-925-1212 Fax: 970-925-1200

SHEET 5 OF 6

JOB# 3025.3

B.59 P32

CONDOMINIUM MAP
WILLE RESIDENCES
 LOT 3, ASPEN HIGHLANDS VILLAGE P.U.D., BLOCK D
 SECTION 14, TOWNSHIP 10 SOUTH RANGE 85 WEST OF THE SIXTH PRINCIPAL MERIDIAN
 PITKIN COUNTY, COLORADO

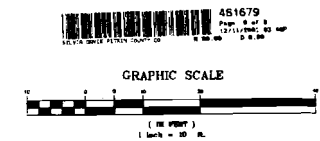


LEGEND

- 5/2 — UNIT WALL WITH DIMENSION
- 5/2 — CEILING WITH DIMENSION
- ⊕ — CEILING HEIGHT
- UNIT STAIRS
- CROSS SECTION
- G.C.E. — GENERAL COMMON ELEMENT
- L.C.E. — LIMITED COMMON ELEMENT
- ELEV=8078.17' — FINISHED FLOOR ELEVATION

NOTES

1. WALL ANGLES ARE 90° OR NOTIFIED UNLESS OTHERWISE INDICATED.
2. UNITS WERE MEASURED IN VARIOUS STAGES OF WALL FINISH.



SECTION A -A1-A2-A3-A4
 AND SECTION B-B1-B2-B3-B4



ALPIN AEI
 ENGINEERING INC.
 970 530-5375 • FAX 970-530-1000

SHEET
 6 OF 6
 JOB# 3025.3