

AREA TABLE

DESCRIPTION	SQ. FT.	ACRES
DEVELOPMENT PARCELS	26,174.34	0.60
CONSERVATION PARCELS	20,174.34	0.46
TOTAL	46,348.68	1.06

CURVE INFORMATION

STATION	CHORD BEARING	CHORD DIST.	ARC BEARING	ARC DIST.	ANGLE
1+00.00	S 89° 57' 12" W	120.00	S 89° 57' 12" W	120.00	90.00
1+120.00	S 89° 57' 12" W	120.00	S 89° 57' 12" W	120.00	90.00
1+240.00	S 89° 57' 12" W	120.00	S 89° 57' 12" W	120.00	90.00
1+360.00	S 89° 57' 12" W	120.00	S 89° 57' 12" W	120.00	90.00
1+480.00	S 89° 57' 12" W	120.00	S 89° 57' 12" W	120.00	90.00
1+600.00	S 89° 57' 12" W	120.00	S 89° 57' 12" W	120.00	90.00
1+720.00	S 89° 57' 12" W	120.00	S 89° 57' 12" W	120.00	90.00
1+840.00	S 89° 57' 12" W	120.00	S 89° 57' 12" W	120.00	90.00
1+960.00	S 89° 57' 12" W	120.00	S 89° 57' 12" W	120.00	90.00
2+000.00	S 89° 57' 12" W	120.00	S 89° 57' 12" W	120.00	90.00

- LEGEND**
- NON-BENT, PUMP IN PLACE AS DESCRIBED
 - FOOTING, BUREAU OF SOILS MANAGEMENT SHAFT LAMP, AS DESCRIBED
 - SEE THIS DRAWING FOR REBAR WITH 1/2" DIAMETER ALUMINUM CAP MARKED BANNER FILE NO. 20692
 - LINE = LIMITED CUMULUM ELEMENT
 - SIDE = GENERAL COMMON ELEMENT

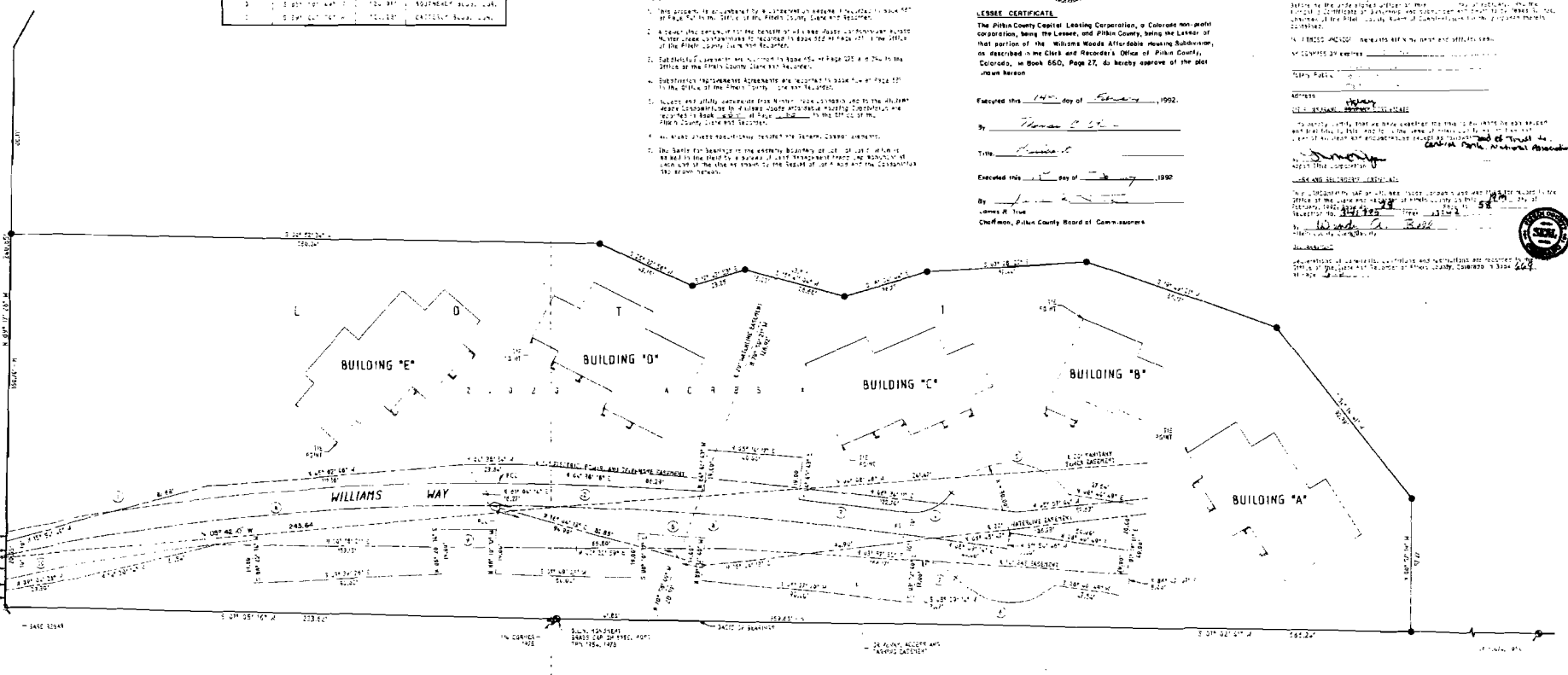
TABLE OF LOCATION TIES

NOTE: ALL TIES ARE TO THE BUREAU OF LAND MANAGEMENT ADJUTANT GENERAL'S SURVEY 1954-1975

BUILDING	BEARING	DISTANCE	DESCRIBED BY
1	S 89° 57' 12" W	207.00	EASTERNLY BLDG. 'D'
2	S 89° 57' 12" W	207.00	EASTERNLY BLDG. 'D'
3	S 89° 57' 12" W	207.00	EASTERNLY BLDG. 'D'
4	S 89° 57' 12" W	207.00	EASTERNLY BLDG. 'D'
5	S 89° 57' 12" W	207.00	EASTERNLY BLDG. 'D'
6	S 89° 57' 12" W	207.00	EASTERNLY BLDG. 'D'

CENTERLINE CURVE INFORMATION

STATION	CHORD BEARING	CHORD DIST.	ARC BEARING	ARC DIST.	ANGLE
1+00.00	S 89° 57' 12" W	120.00	S 89° 57' 12" W	120.00	90.00
1+120.00	S 89° 57' 12" W	120.00	S 89° 57' 12" W	120.00	90.00
1+240.00	S 89° 57' 12" W	120.00	S 89° 57' 12" W	120.00	90.00
1+360.00	S 89° 57' 12" W	120.00	S 89° 57' 12" W	120.00	90.00
1+480.00	S 89° 57' 12" W	120.00	S 89° 57' 12" W	120.00	90.00
1+600.00	S 89° 57' 12" W	120.00	S 89° 57' 12" W	120.00	90.00
1+720.00	S 89° 57' 12" W	120.00	S 89° 57' 12" W	120.00	90.00
1+840.00	S 89° 57' 12" W	120.00	S 89° 57' 12" W	120.00	90.00
1+960.00	S 89° 57' 12" W	120.00	S 89° 57' 12" W	120.00	90.00
2+000.00	S 89° 57' 12" W	120.00	S 89° 57' 12" W	120.00	90.00



LESSOR CERTIFICATE

ALL OF THE INTERESTS OF THE Central Bank, National Assoc. OF PITKIN, COLORADO, INC. IN THE PORTION OF LOT 6, RUBEY SUBDIVISION, PITKIN COUNTY, COLORADO, DESCRIBED IN THE CERTIFICATE OF TITLE NO. 27, BOOK 650, PAGE 27, OF THE PUBLIC RECORDS OF PITKIN COUNTY, COLORADO, ARE HEREBY CONVEYED TO THE PITKIN COUNTY CAPITAL LEASING CORPORATION, A COLORADO NON-PROFIT CORPORATION, BEING THE LESSEE, AND PITKIN COUNTY, BEING THE LESSOR, OF THAT PORTION OF THE WILLIAMS WOODS AFFORDABLE HOUSING SUBDIVISION, AS DESCRIBED IN THE CLERK AND RECORDER'S OFFICE OF PITKIN COUNTY, COLORADO, IN BOOK 650, PAGE 27, AS SOLELY APPEAR OF THE PLAT HEREIN.

LESSOR CERTIFICATE

The Pitkin County Capital Leasing Corporation, a Colorado non-profit corporation, being the Lessee, and Pitkin County, being the Lessor, of that portion of the Williams Woods Affordable Housing Subdivision, as described in the Clerk and Recorder's Office of Pitkin County, Colorado, in Book 650, Page 27, do hereby approve of the plat herein.

Executed this 14th day of February, 1992.

By: *Thomas J. ...*

Title: *Chairman*

Executed this 14th day of February, 1992.

By: *James R. ...*

Chairman, Pitkin County Board of Commissioners

LESSOR CERTIFICATE

The Pitkin County Capital Leasing Corporation, a Colorado non-profit corporation, being the Lessee, and Pitkin County, being the Lessor, of that portion of the Williams Woods Affordable Housing Subdivision, as described in the Clerk and Recorder's Office of Pitkin County, Colorado, in Book 650, Page 27, do hereby approve of the plat herein.

Executed this 14th day of February, 1992.

By: *Thomas J. ...*

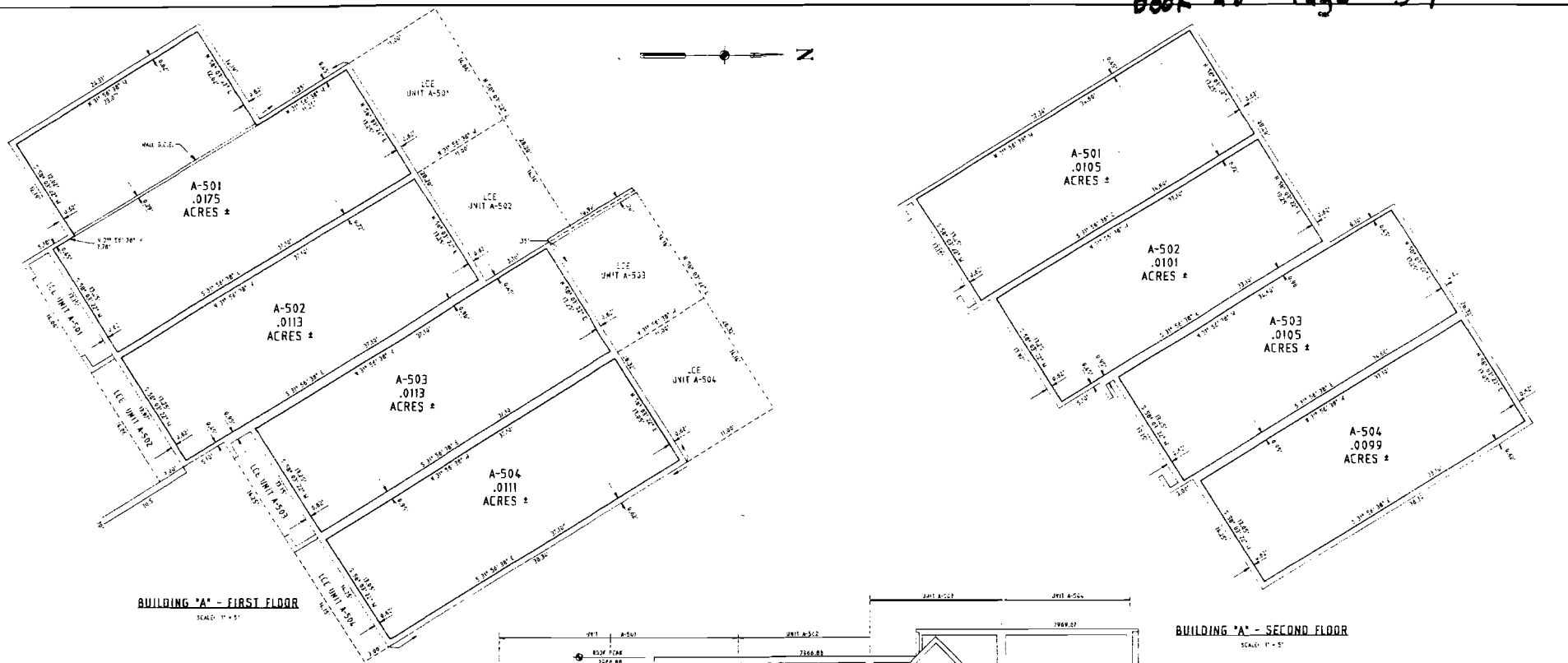
Title: *Chairman*

Executed this 14th day of February, 1992.

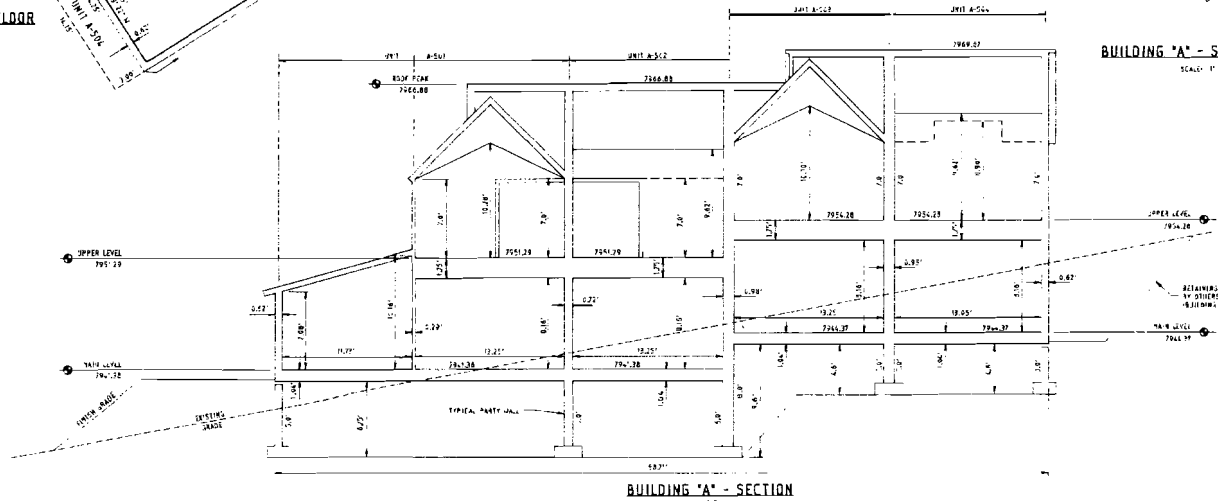
By: *James R. ...*

Chairman, Pitkin County Board of Commissioners

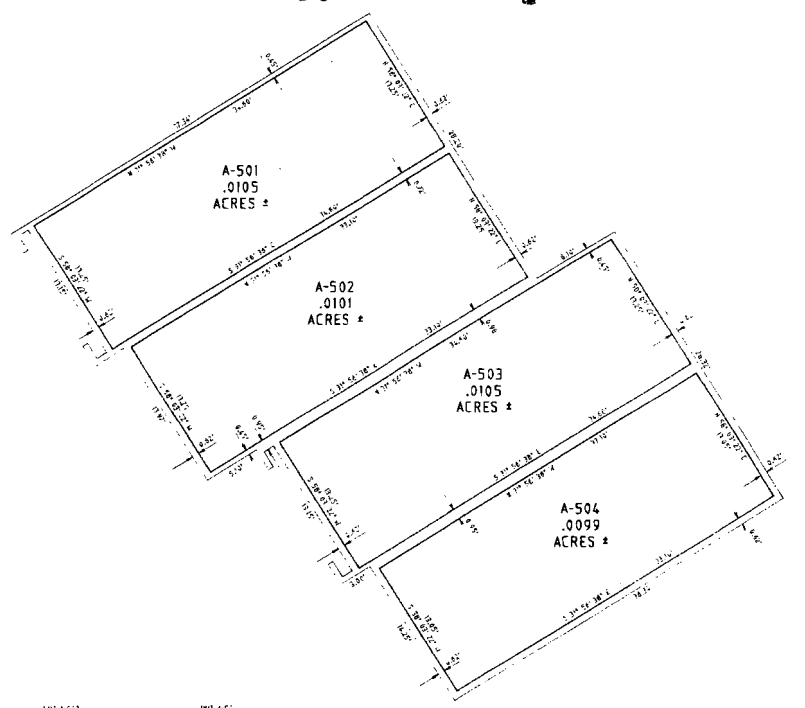
Book 28 Page 58



BUILDING "A" - FIRST FLOOR
SCALE: 1" = 5'



BUILDING "A" - SECTION



BUILDING "A" - SECOND FLOOR
SCALE: 1" = 5'

AREA TABLE				
BUILDING "A"				
UNIT	FIRST LEVEL SQ. FT.	SECOND LEVEL SQ. FT.	CRAWL AREA SQ. FT.	TOTAL AREA FIRST AND SECOND LEVELS ONLY, SQ. FT.
A-501	782.2	458.5	782.2	2022.9
A-502	491.1	438.5	491.1	1420.7
A-503	491.1	438.5	491.1	1420.7
A-504	478.2	432.0	478.2	1388.4

Holland Biddle
Feb. 6, 1992

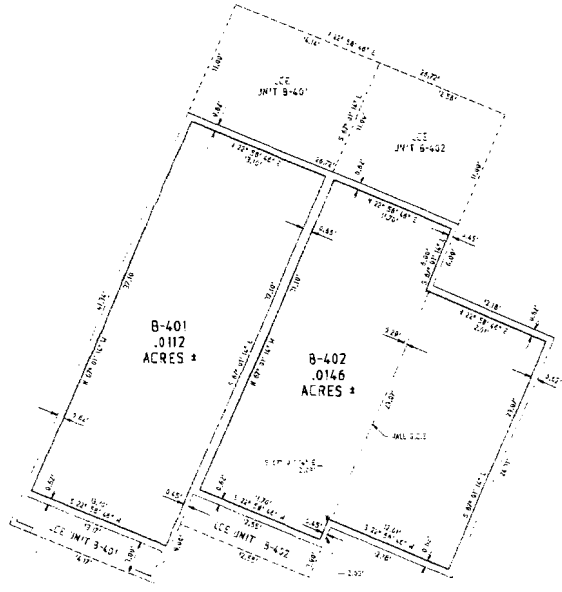
BANNER

BANNER ASSOCIATES, INC. • CONSULTING ENGINEERS & ARCHITECTS
2777 CROSSROADS & WASHINGTON STREET, DENVER, CO 80202-1000
303.733.8111 • FAX: 303.733.8111 • WWW.BANNER-ASSOCIATES.COM

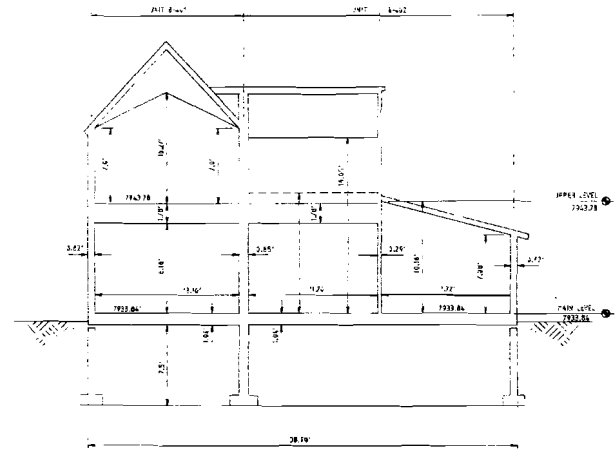
MAP OF WILLIAMS WOODS CONDOMINIUMS - BUILDING "A"
LOT 1, WILLIAMS WOODS AFFORDABLE HOUSING SUBDIVISION
PITKIN COUNTY, COLORADO

SCALE: 1/8" = 1'-0" DATE: 7-05-92
AS SHOWN: 6-29-92
SHEET NO: 2 of 6

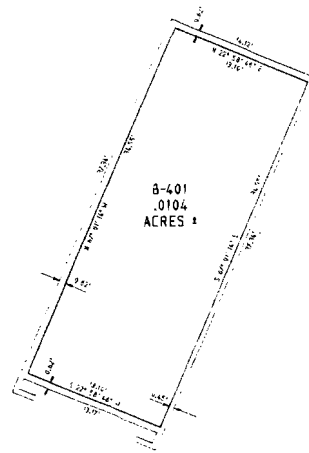
PWA 03 PWA 01



BUILDING "B" - FIRST FLOOR
SCALE: 1" = 4'-0"



BUILDING "B" - SECTION
SCALE: 1" = 4'-0"



BUILDING "B" - SECOND FLOOR
SCALE: 1" = 4'-0"

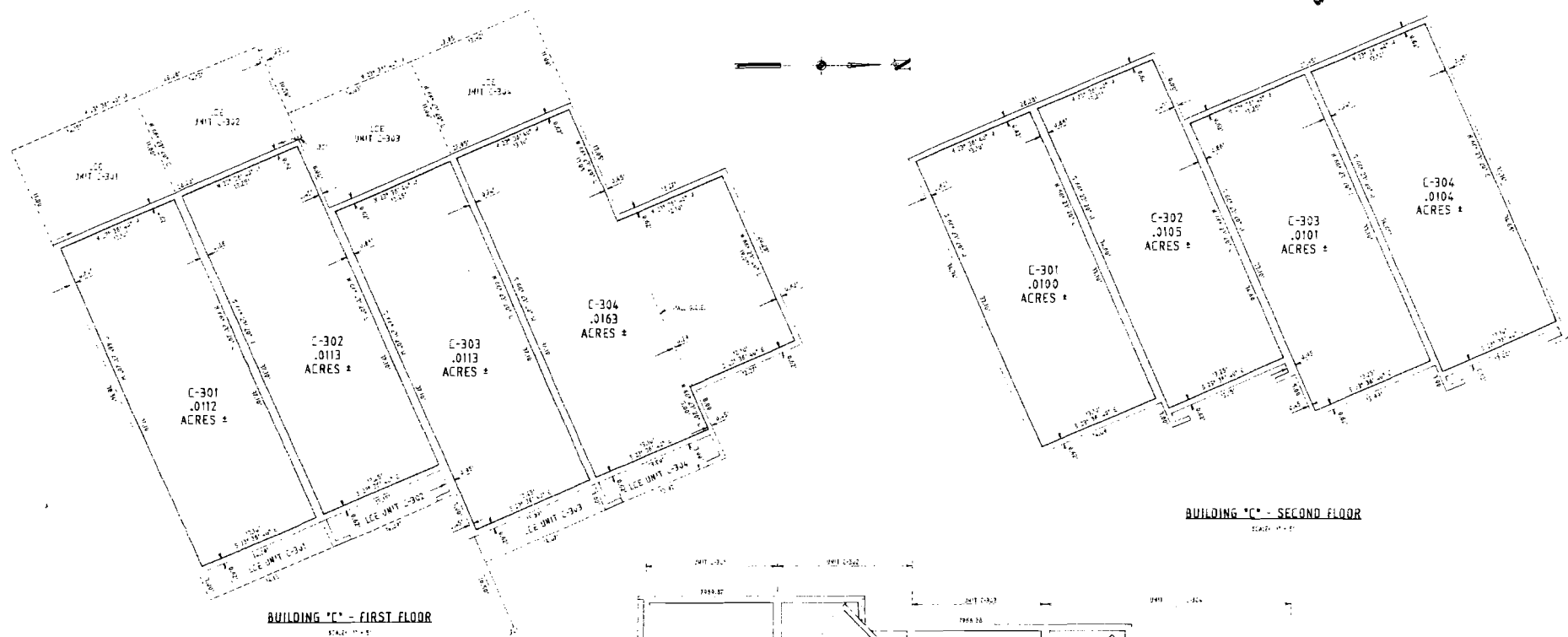
AREA TABLE				
BUILDING "B"				
UNIT	FIRST LEVEL SQ. FT.	SECOND LEVEL SQ. FT.	CRAWL AREA SQ. FT.	TOTAL AREA FIRST AND SECOND LEVELS ONLY, SQ. FT.
B-401	824.2	---	64.8	889.0
B-402	881.0	452.4	485.0	1818.4

William Balle
Feb. 6, 1992

BANNER
BANNER ASSOCIATES, INC. • CONSULTING ENGINEERS & ARCHITECTS
2777 S. BROADWAY SUITE 400 DENVER, CO 80209
303.733.8800 • 303.733.8801 • 303.733.8802

MAP OF WILLIAMS WOODS CONDOMINIUMS - BUILDING "B"
LOT 1, WILLIAMS WOODS AFFORDABLE HOUSING SUBDIVISION
PITKIN COUNTY, COLORADO

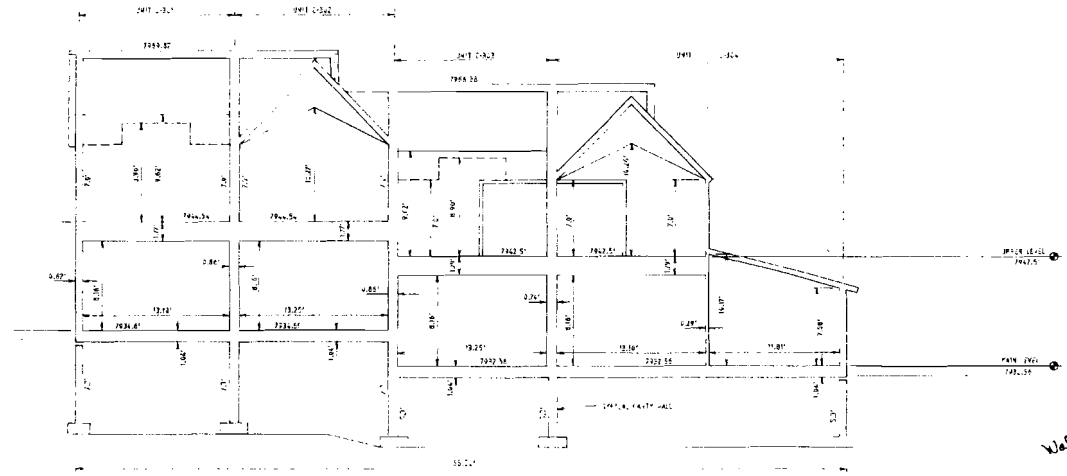
SCALE: 1" = 4'-0"
DATE: 2-6-92
PAGE: 3 OF 6



BUILDING "C" - FIRST FLOOR
SCALE: 1" = 10'

BUILDING "C" - SECOND FLOOR
SCALE: 1" = 10'

AREA TABLE				
BUILDING "C"				
UNIT	FIRST LEVEL SQ. FT.	SECOND LEVEL SQ. FT.	CRAWL AREA SQ. FT.	TOTAL AREA FIRST AND SECOND LEVELS ONLY, SQ. FT.
C-301	1,120	1,120	100	2,340
C-302	1,130	1,130	100	2,360
C-303	1,130	1,130	100	2,360
C-304	1,630	1,630	100	3,360



BUILDING "C" - SECTION
SCALE: 1" = 10'

Walter J. Engel
Feb. 6, 1992

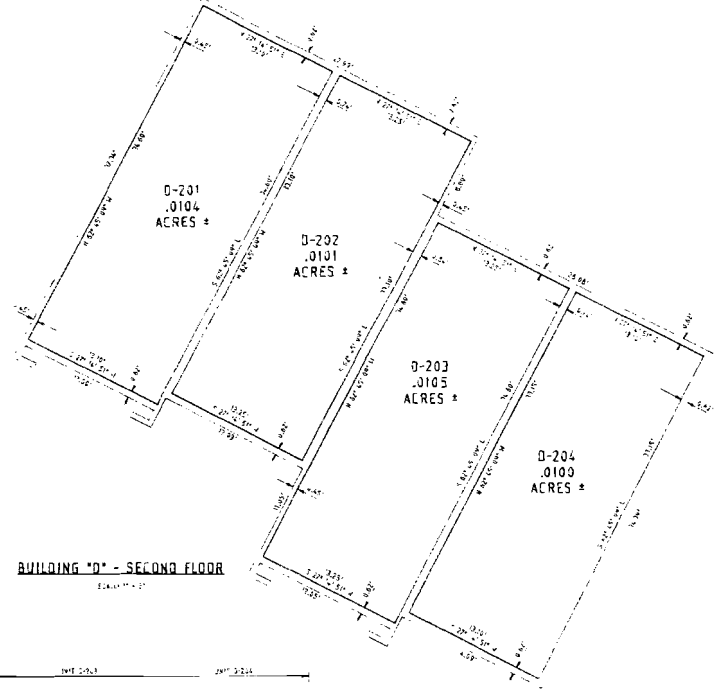
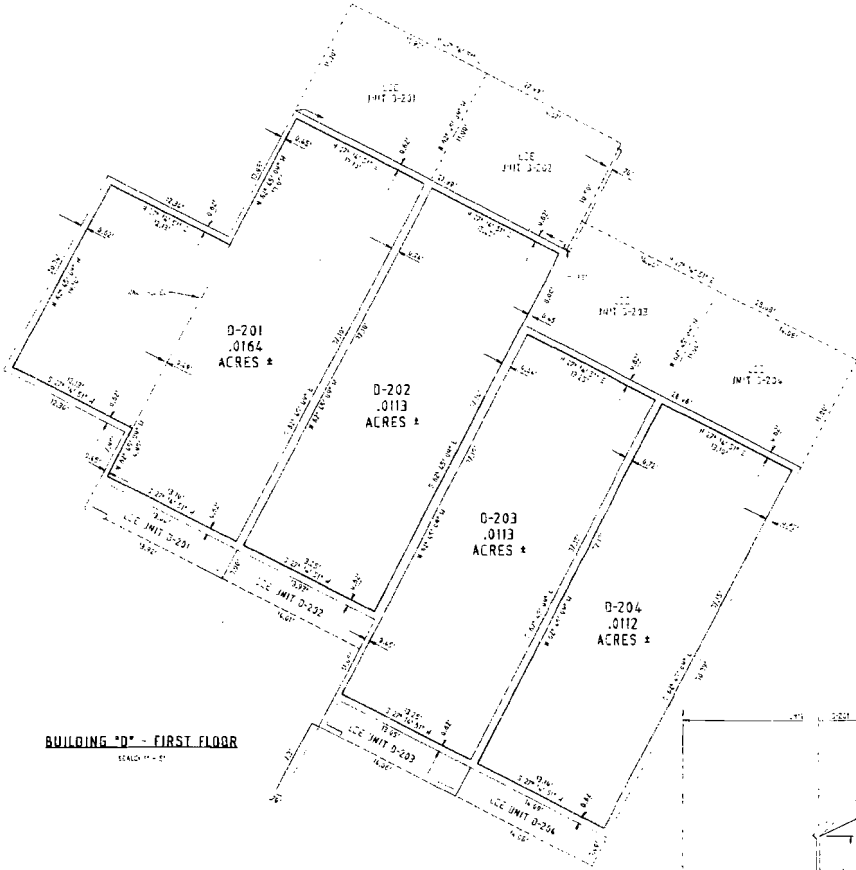
BOOK 28 PAGE 61

BANNER

BANNER ASSOCIATES, INC. • CONSULTING ENGINEERS & ARCHITECTS
2777 CROSSROADS BOULDER, COLORADO 80501 • (303) 440-2000
405 E. MAIN • SUITE # 4 • ASPEN, CO 81611 • (970) 925-2337

MAP OF WILLIAMS WOODS CONDOMINIUMS - BUILDING "C"
LOT 1, WILLIAMS WOODS AFFORDABLE HOUSING SUBDIVISION
PITKIN COUNTY, COLORADO

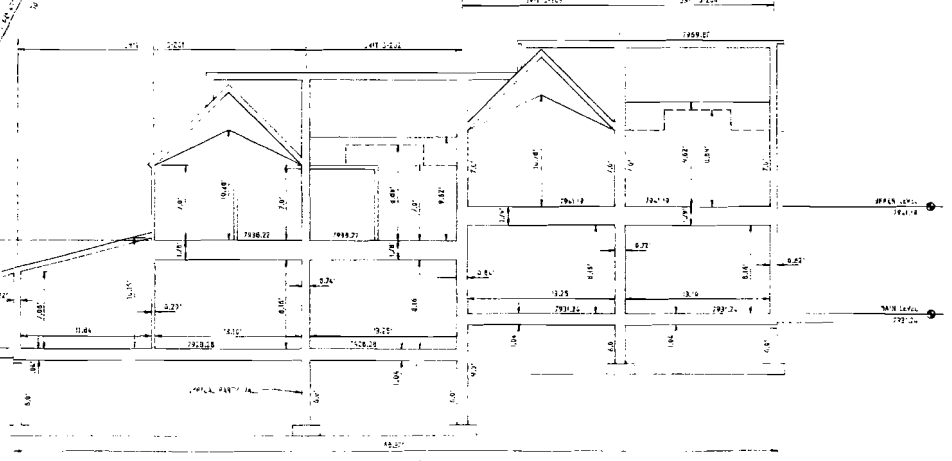
SCALE: 1" = 10' 10' = 10' 10' = 10'
DATE: 2-05-92
SHEET NO. 4 of 6



BUILDING "D" - SECOND FLOOR

BUILDING "D" - FIRST FLOOR

AREA TABLE				
BUILDING "D"				
UNIT	FIRST LEVEL SQ. FT.	SECOND LEVEL SQ. FT.	CRAWL AREA SQ. FT.	TOTAL AREA FIRST AND SECOND LEVELS ONLY, SQ. FT.
D-201	111.1	452.3	211.1	1184.5
D-202	481.4	428.4	491.4	1401.2
D-203	481.2	428.4	491.2	1400.8
D-204	481.2	428.4	491.2	1400.8



BUILDING "D" - SECTION



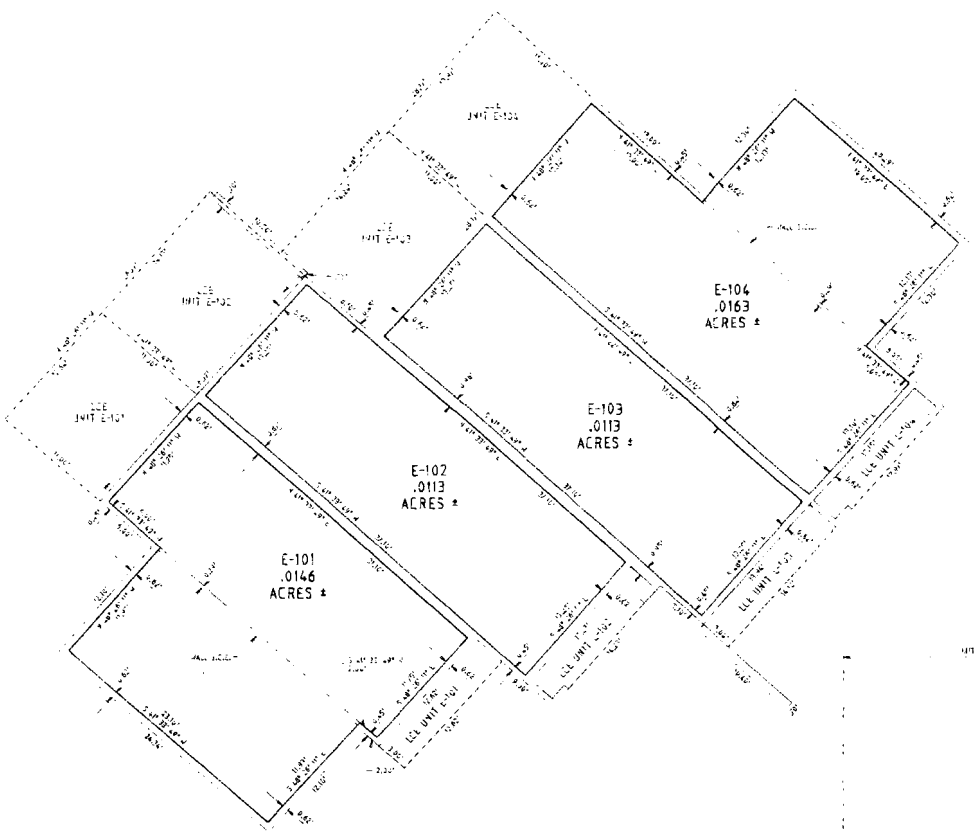
Feb 6, 1992

BANNER

BANNER ASSOCIATES, INC. • CONSULTING ENGINEERS & ARCHITECTS
 1197 CALLETONS BOULEVARD • DENVER, CO 80202-3231 • PHONE 303-733-1111 • FAX 303-733-1111

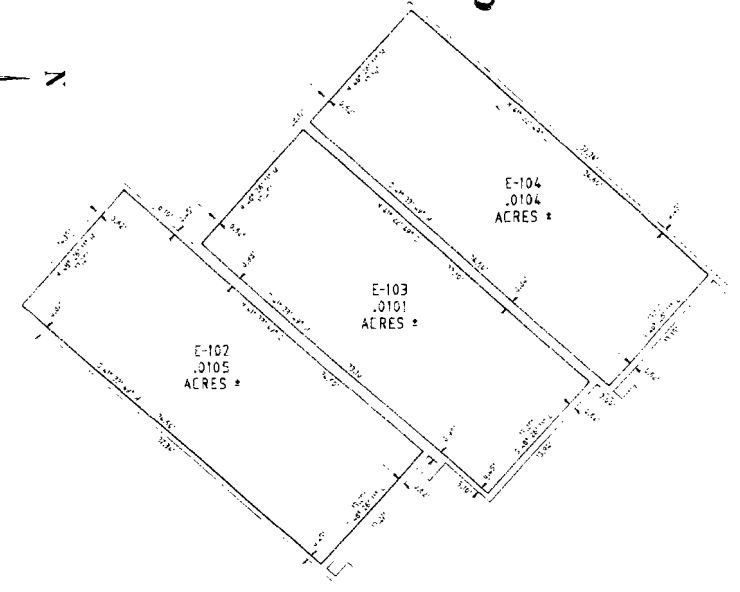
MAP OF WILLIAMS WOODS CONDOMINIUMS - BUILDING "D"
 LOT 1, WILLIAMS WOODS AFFORDABLE HOUSING SUBDIVISION
 PITKIN COUNTY, COLORADO

SCALE: 1" = 20'
 SHEET NO: 3219
 DATE: 2-05-92
 5 of 6

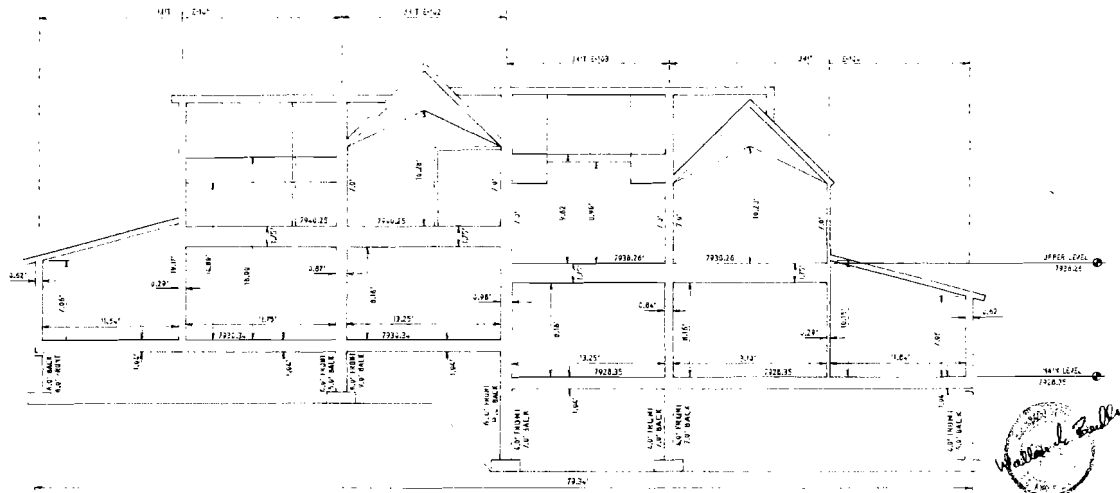


BUILDING "E" - FIRST FLOOR
SCALE: 1" = 5'

AREA TABLE				
BUILDING "E"				
UNIT	FIRST LEVEL AREA SQ. FT.	SECOND LEVEL AREA SQ. FT.	TOTAL AREA FIRST AND SECOND LEVELS ONLY, SQ. FT.	TOTAL AREA FIRST AND SECOND LEVELS ONLY, SQ. FT.
E-101	774.2	774.2	834.1
E-102	441.4	425.4	866.8	956.9
E-103	441.4	425.4	866.8	956.9
E-104	774.2	425.4	1200.0	1325.3



BUILDING "E" - SECOND FLOOR
SCALE: 1" = 5'



BUILDING "E" - SECTION
SCALE: 1/8" = 1'-0"

William & Paula
Feb. 6, 1992

BANNER

BANNER ASSOCIATES, INC. • CONSULTING ENGINEERS & ARCHITECTS
2777 CHERRY BLVD. SUITE 200 • DENVER, CO 80202 • (303) 733-8800
525 E. MAIN • SUITE 5 • ARAPAHO, CO 80011 • (303) 928-9387

MAP OF WILLIAMS WOODS CONDOMINIUMS - BUILDING "E"
LOT 1, WILLIAMS WOODS AFFORDABLE HOUSING SUBDIVISION
PITKIN COUNTY, COLORADO

SCALE: 1/8" = 1'-0" DRAWN: 2/05/92
45 SHEETS: 5012 SHEET NO.: 2 OF 2
DATE: FEB 6 1992