

B-58 P-22

WATER VIEW CONDOMINIUMS  
SITUATED IN LOT 4 SECTION 31 TOWNSHIP 8 SOUTH,  
RANGE 65 WEST OF THE 6TH PRINCIPAL MERIDIAN  
COUNTY OF PITKIN, STATE OF COLORADO

SHEET 1 OF 2

GRAPHIC SCALE  
1" = 100' 0"

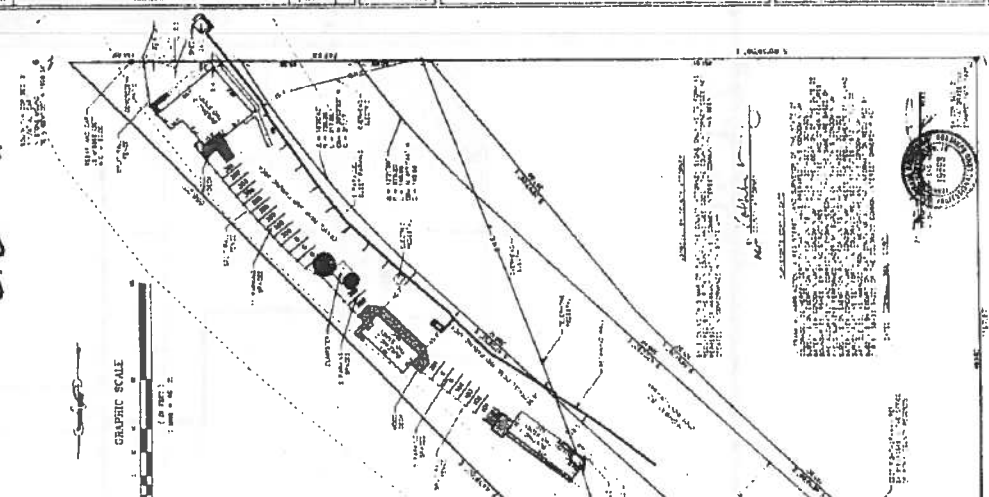


VICINITY MAP

SCALE 1" = 1 MILE

PROPERTY MAPS  
1. 1981 COLORADO DEPARTMENT OF PUBLIC SAFETY  
2. 1981 COLORADO DEPARTMENT OF PUBLIC SAFETY  
3. 1981 COLORADO DEPARTMENT OF PUBLIC SAFETY  
4. 1981 COLORADO DEPARTMENT OF PUBLIC SAFETY  
5. 1981 COLORADO DEPARTMENT OF PUBLIC SAFETY  
6. 1981 COLORADO DEPARTMENT OF PUBLIC SAFETY  
7. 1981 COLORADO DEPARTMENT OF PUBLIC SAFETY  
8. 1981 COLORADO DEPARTMENT OF PUBLIC SAFETY  
9. 1981 COLORADO DEPARTMENT OF PUBLIC SAFETY  
10. 1981 COLORADO DEPARTMENT OF PUBLIC SAFETY

1. 1981 COLORADO DEPARTMENT OF PUBLIC SAFETY  
2. 1981 COLORADO DEPARTMENT OF PUBLIC SAFETY  
3. 1981 COLORADO DEPARTMENT OF PUBLIC SAFETY  
4. 1981 COLORADO DEPARTMENT OF PUBLIC SAFETY  
5. 1981 COLORADO DEPARTMENT OF PUBLIC SAFETY  
6. 1981 COLORADO DEPARTMENT OF PUBLIC SAFETY  
7. 1981 COLORADO DEPARTMENT OF PUBLIC SAFETY  
8. 1981 COLORADO DEPARTMENT OF PUBLIC SAFETY  
9. 1981 COLORADO DEPARTMENT OF PUBLIC SAFETY  
10. 1981 COLORADO DEPARTMENT OF PUBLIC SAFETY



WATER VIEW APARTMENTS, L.P.  
1400 N. W. 10TH AVENUE  
DENVER, COLORADO 80202

B-58 P-22

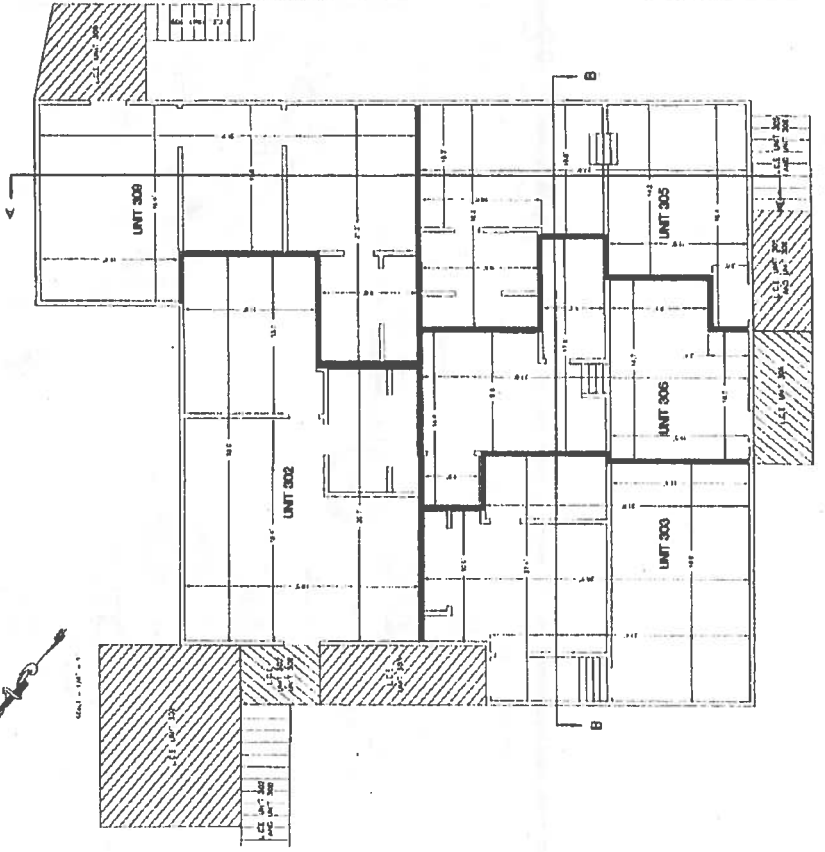
PROPERTY MAPS

PROPERTY MAPS

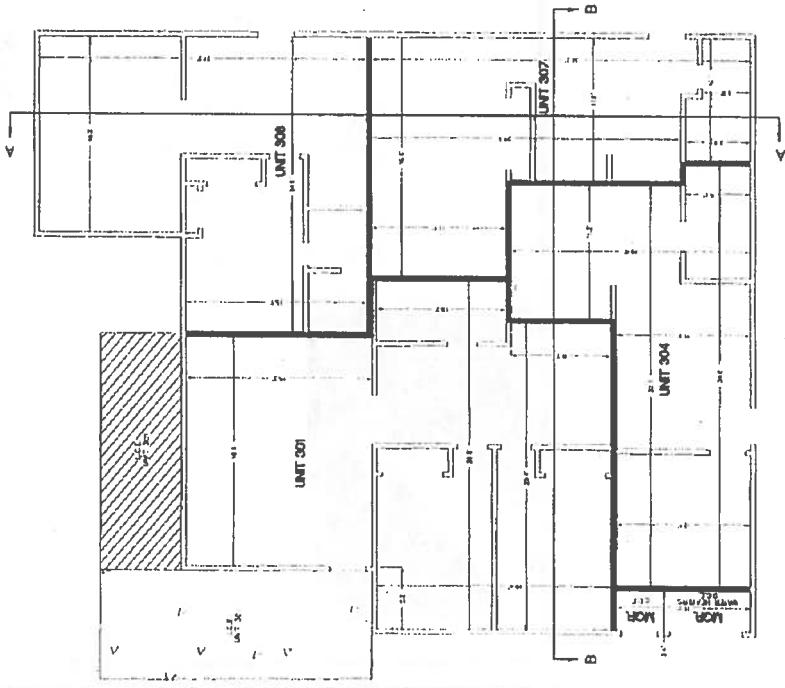
PROPERTY MAPS

B58 P.23

WATER VIEW CONDOMINIUMS  
SITUATED IN LOT 4, SECTION 31, TOWNSHIP 8 SOUTH,  
RANGE 85 WEST, OF THE 6TH PRINCIPAL MERIDIAN  
COUNTY OF PITKIN, STATE OF COLORADO  
SHEET 2 OF 3



BUILDING 3  
SECOND FLOOR



BUILDING 3  
MAIN FLOOR

P.23

B58

PREPARED BY

DATE

NO.	DATE	REVISION
1	10/11/01	ISSUED FOR PERMITS
2	11/14/01	REVISED PER COMMENTS
3	12/11/01	REVISED PER COMMENTS
4	01/10/02	REVISED PER COMMENTS
5	02/07/02	REVISED PER COMMENTS
6	03/07/02	REVISED PER COMMENTS
7	04/02/02	REVISED PER COMMENTS
8	05/02/02	REVISED PER COMMENTS
9	06/02/02	REVISED PER COMMENTS
10	07/02/02	REVISED PER COMMENTS
11	08/02/02	REVISED PER COMMENTS
12	09/02/02	REVISED PER COMMENTS
13	10/02/02	REVISED PER COMMENTS
14	11/02/02	REVISED PER COMMENTS
15	12/02/02	REVISED PER COMMENTS
16	01/02/03	REVISED PER COMMENTS
17	02/02/03	REVISED PER COMMENTS
18	03/02/03	REVISED PER COMMENTS
19	04/02/03	REVISED PER COMMENTS
20	05/02/03	REVISED PER COMMENTS
21	06/02/03	REVISED PER COMMENTS
22	07/02/03	REVISED PER COMMENTS
23	08/02/03	REVISED PER COMMENTS
24	09/02/03	REVISED PER COMMENTS
25	10/02/03	REVISED PER COMMENTS
26	11/02/03	REVISED PER COMMENTS
27	12/02/03	REVISED PER COMMENTS
28	01/02/04	REVISED PER COMMENTS
29	02/02/04	REVISED PER COMMENTS
30	03/02/04	REVISED PER COMMENTS
31	04/02/04	REVISED PER COMMENTS
32	05/02/04	REVISED PER COMMENTS
33	06/02/04	REVISED PER COMMENTS
34	07/02/04	REVISED PER COMMENTS
35	08/02/04	REVISED PER COMMENTS
36	09/02/04	REVISED PER COMMENTS
37	10/02/04	REVISED PER COMMENTS
38	11/02/04	REVISED PER COMMENTS
39	12/02/04	REVISED PER COMMENTS
40	01/02/05	REVISED PER COMMENTS
41	02/02/05	REVISED PER COMMENTS
42	03/02/05	REVISED PER COMMENTS
43	04/02/05	REVISED PER COMMENTS
44	05/02/05	REVISED PER COMMENTS
45	06/02/05	REVISED PER COMMENTS
46	07/02/05	REVISED PER COMMENTS
47	08/02/05	REVISED PER COMMENTS
48	09/02/05	REVISED PER COMMENTS
49	10/02/05	REVISED PER COMMENTS
50	11/02/05	REVISED PER COMMENTS
51	12/02/05	REVISED PER COMMENTS
52	01/02/06	REVISED PER COMMENTS
53	02/02/06	REVISED PER COMMENTS
54	03/02/06	REVISED PER COMMENTS
55	04/02/06	REVISED PER COMMENTS
56	05/02/06	REVISED PER COMMENTS
57	06/02/06	REVISED PER COMMENTS
58	07/02/06	REVISED PER COMMENTS
59	08/02/06	REVISED PER COMMENTS
60	09/02/06	REVISED PER COMMENTS
61	10/02/06	REVISED PER COMMENTS
62	11/02/06	REVISED PER COMMENTS
63	12/02/06	REVISED PER COMMENTS
64	01/02/07	REVISED PER COMMENTS
65	02/02/07	REVISED PER COMMENTS
66	03/02/07	REVISED PER COMMENTS
67	04/02/07	REVISED PER COMMENTS
68	05/02/07	REVISED PER COMMENTS
69	06/02/07	REVISED PER COMMENTS
70	07/02/07	REVISED PER COMMENTS
71	08/02/07	REVISED PER COMMENTS
72	09/02/07	REVISED PER COMMENTS
73	10/02/07	REVISED PER COMMENTS
74	11/02/07	REVISED PER COMMENTS
75	12/02/07	REVISED PER COMMENTS
76	01/02/08	REVISED PER COMMENTS
77	02/02/08	REVISED PER COMMENTS
78	03/02/08	REVISED PER COMMENTS
79	04/02/08	REVISED PER COMMENTS
80	05/02/08	REVISED PER COMMENTS
81	06/02/08	REVISED PER COMMENTS
82	07/02/08	REVISED PER COMMENTS
83	08/02/08	REVISED PER COMMENTS
84	09/02/08	REVISED PER COMMENTS
85	10/02/08	REVISED PER COMMENTS
86	11/02/08	REVISED PER COMMENTS
87	12/02/08	REVISED PER COMMENTS
88	01/02/09	REVISED PER COMMENTS
89	02/02/09	REVISED PER COMMENTS
90	03/02/09	REVISED PER COMMENTS
91	04/02/09	REVISED PER COMMENTS
92	05/02/09	REVISED PER COMMENTS
93	06/02/09	REVISED PER COMMENTS
94	07/02/09	REVISED PER COMMENTS
95	08/02/09	REVISED PER COMMENTS
96	09/02/09	REVISED PER COMMENTS
97	10/02/09	REVISED PER COMMENTS
98	11/02/09	REVISED PER COMMENTS
99	12/02/09	REVISED PER COMMENTS
100	01/02/10	REVISED PER COMMENTS

WATER VIEW APARTMENTS, LLC  
 17700 E. COLFAX AVENUE, SUITE 100  
 DENVER, COLORADO 80202  
 PROJECT: 01-2  
 SHEET: 02  
 DATE: 11/14/01

NEW DENVER ENGINEERING, INC.  
 17700 E. COLFAX AVENUE, SUITE 100  
 DENVER, COLORADO 80202  
 PROJECT: 01-2  
 SHEET: 02  
 DATE: 11/14/01

DATE: 11/14/01  
 DRAWN BY: J. B. BROWN  
 CHECKED BY: J. B. BROWN  
 PROJECT: 01-2  
 SHEET: 02

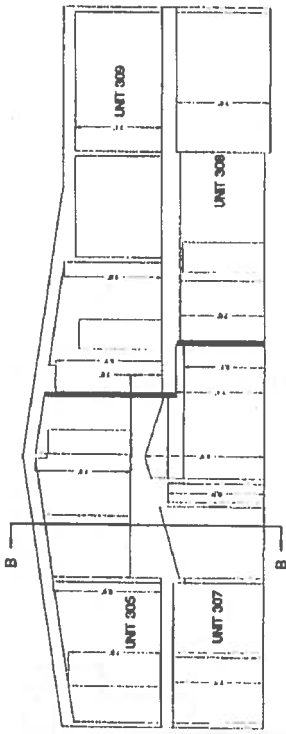
DATE: 11/14/01  
 DRAWN BY: J. B. BROWN  
 CHECKED BY: J. B. BROWN  
 PROJECT: 01-2  
 SHEET: 02

17700 E. COLFAX AVENUE, SUITE 100, DENVER, COLORADO 80202

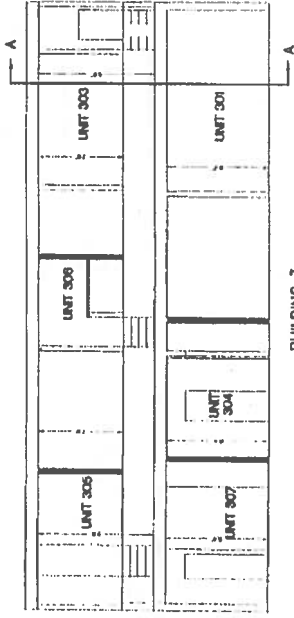


P. 58 P. 25

WATER VIEW CONDOMINIUMS  
SITUATED IN LOT 4, SECTION 31, TOWNSHIP 8 SOUTH,  
RANGE 85 WEST OF THE 6TH PRINCIPAL MERIDIAN  
COUNTY OF PITKIN, STATE OF COLORADO  
SHEET 4 OF 5



BUILDING 3  
SECTION A-A  
SCALE: 1/4" = 1'-0"



BUILDING 3  
SECTION B-B  
SCALE: 1/4" = 1'-0"

P. 58 P. 25

P. 58 P. 25

PLANNING NUMBER

PLANNING NUMBER

DATE: 11/11/11	BY: [Signature]	PROJECT: WATER VIEW APARTMENTS, LLC	SCALE: 1/4" = 1'-0"
DATE: 11/11/11	BY: [Signature]	PROJECT: WATER VIEW APARTMENTS, LLC	SCALE: 1/4" = 1'-0"
DATE: 11/11/11	BY: [Signature]	PROJECT: WATER VIEW APARTMENTS, LLC	SCALE: 1/4" = 1'-0"
DATE: 11/11/11	BY: [Signature]	PROJECT: WATER VIEW APARTMENTS, LLC	SCALE: 1/4" = 1'-0"

THIS DRAWING IS THE PROPERTY OF THE ARCHITECT AND IS NOT TO BE REPRODUCED OR COPIED IN ANY MANNER WITHOUT THE WRITTEN PERMISSION OF THE ARCHITECT.

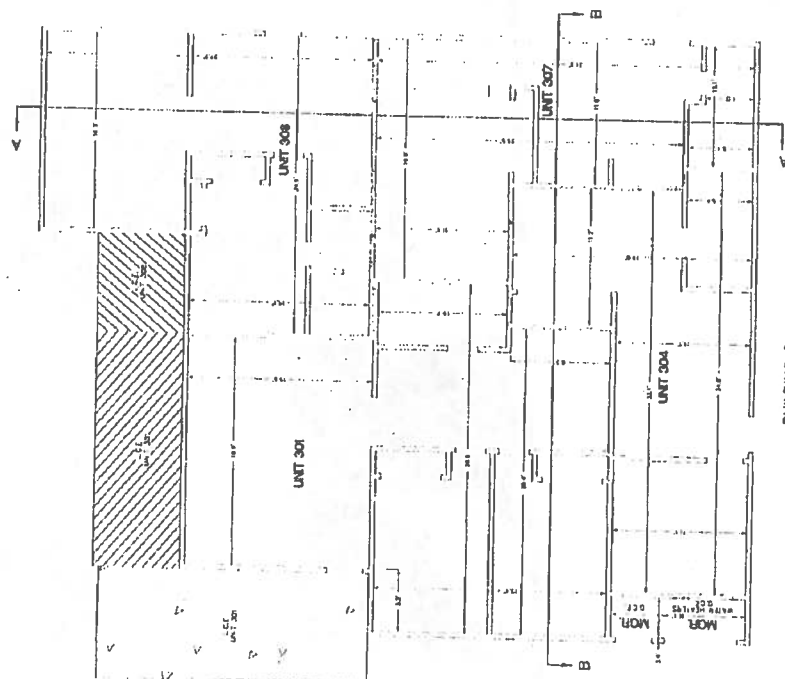




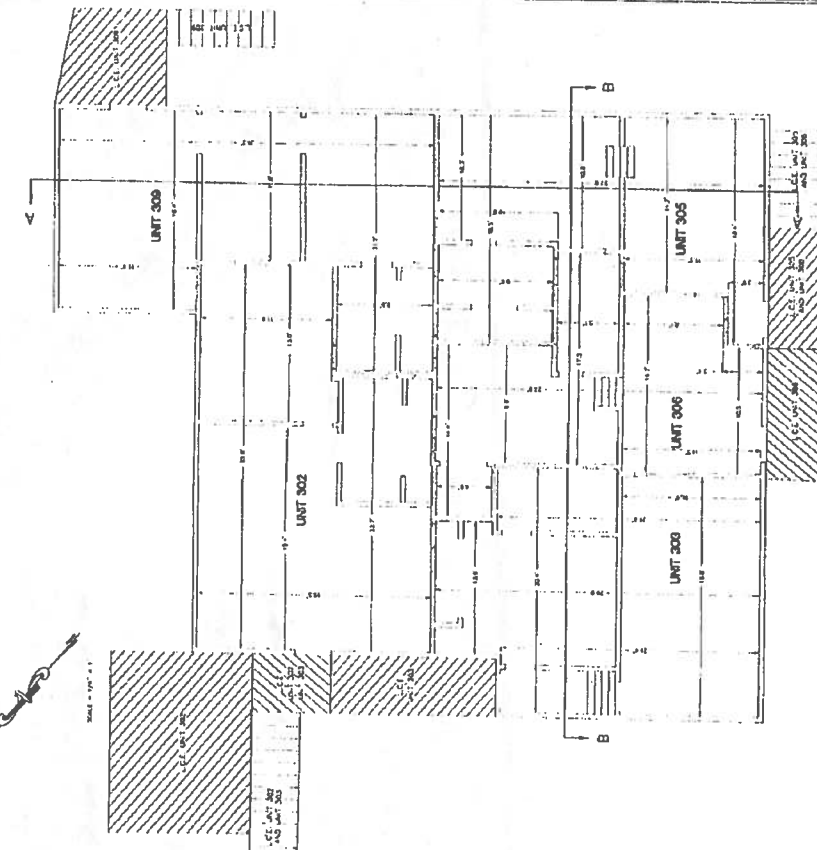


FIRST AVENUE WATER VIEW CONDOMINIUMS PLAT  
 SITUATED IN LOT 4, SECTION 31, TOWNSHIP 8 SOUTH,  
 RANGE 85 WEST, OF THE 6TH PRINCIPAL MERIDIAN  
 COUNTY OF PITKIN, STATE OF COLORADO  
 SHEET 2 OF 3

B63 P12



BUILDING 3  
 MAIN FLOOR



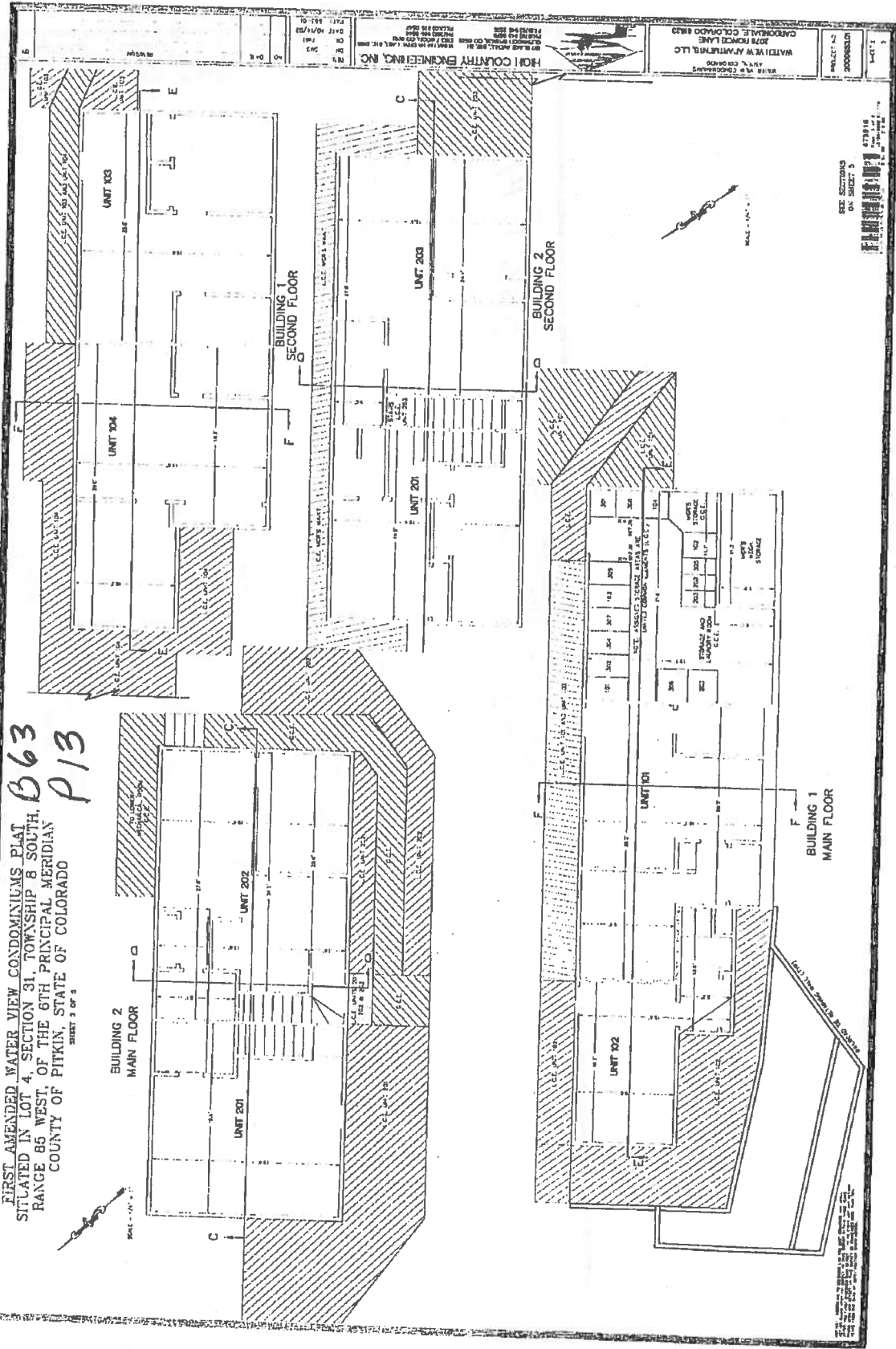
BUILDING 3  
 SECOND FLOOR

<b>WATER VIEW APARTMENTS, L.L.C.</b> 1078 TORRE LANE DENVER, CO 80202 WATER VIEW CONDOMINIUMS 1078 TORRE LANE DENVER, CO 80202		<b>HIGH COUNTRY ENGINEERING, INC.</b> 1078 TORRE LANE DENVER, CO 80202 303.303.3033 1078 TORRE LANE DENVER, CO 80202		PROJECT NO. SHEETS SHEET 2 OF 3	DATE 12/15/11
---	--	---	--	---------------------------------------	------------------



FIRST AMENDED WATER VIEW CONDOMINIUMS PLAT  
 SITUATED IN LOT 4, SECTION 31, TOWNSHIP 8 SOUTH,  
 RANGE 85 WEST, OF THE 6TH PRINCIPAL MERIDIAN  
 COUNTY OF PITKIN, STATE OF COLORADO  
 SHEET 5 OF 5

B63  
 P13



WATERVIEW APARTMENTS, LLC  
 2078 POWERLINE  
 CARROLL COUNTY, COLORADO 80424

HOH COUNTRY ENGINEERING, INC.  
 1000 1/2 W. 13TH AVE. SUITE 100  
 FORT COLLINS, CO 80526  
 PHONE 970-226-8888  
 FAX 970-226-8889  
 WWW.HOHCOUNTRYENGINEERING.COM

DATE: 04/14/2013  
 DRAWN: JMS  
 CHECKED: JMS  
 PROJECT: B63  
 SHEET: P13

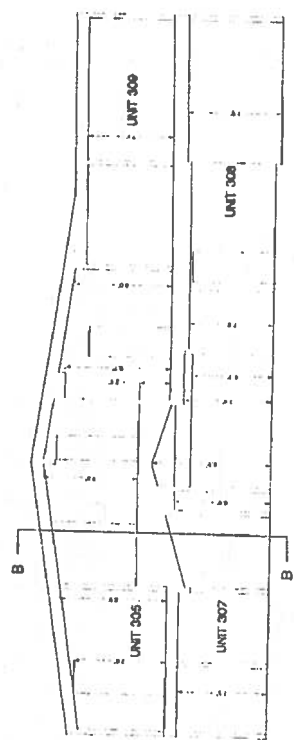
SCALE: 1/4" = 1'-0"

DATE: 04/14/2013

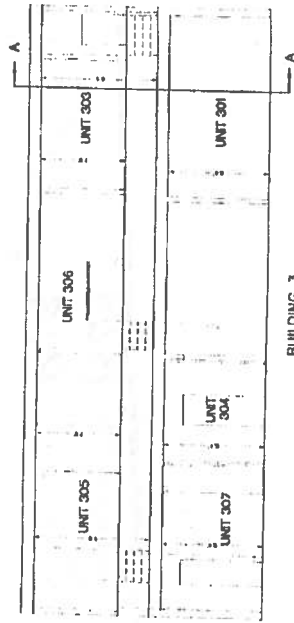
SEE SHEETS B63  
 P11, P12, P14, P15, P16, P17, P18, P19, P20, P21, P22, P23, P24, P25, P26, P27, P28, P29, P30, P31, P32, P33, P34, P35, P36, P37, P38, P39, P40, P41, P42, P43, P44, P45, P46, P47, P48, P49, P50, P51, P52, P53, P54, P55, P56, P57, P58, P59, P60, P61, P62, P63, P64, P65, P66, P67, P68, P69, P70, P71, P72, P73, P74, P75, P76, P77, P78, P79, P80, P81, P82, P83, P84, P85, P86, P87, P88, P89, P90, P91, P92, P93, P94, P95, P96, P97, P98, P99, P100

FIRST AMENDED WATER VIEW CONDOMINIUMS PLAT  
 SITUATED IN LOT 4, SECTION 31, TOWNSHIP 8 SOUTH,  
 RANGE 85 WEST, OF THE 6TH PRINCIPAL MERIDIAN  
 COUNTY OF PITKIN, STATE OF COLORADO  
 SHEET 4 OF 5

B63 P 14



BUILDING 3  
 SECTION A-A  
 SHEET 4 OF 5



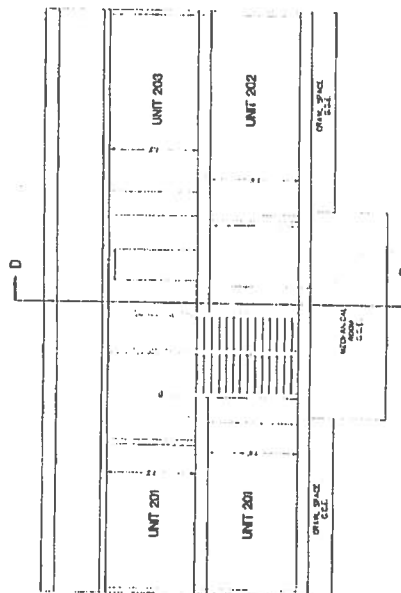
BUILDING 3  
 SECTION B-B  
 SHEET 4 OF 5

HIGH COUNTY ENGINEERING, INC. 10000 W. 10TH AVENUE, SUITE 100 DENVER, CO 80231 TEL: 724-8800 FAX: 724-8801 WWW.HIGHCOUNTYENGINEERING.COM		WATSON ADVANTAGE, LLC 10000 W. 10TH AVENUE, SUITE 100 DENVER, CO 80231 TEL: 724-8800 FAX: 724-8801	
DATE: 10/14/22 DRAWN BY: JRM CHECKED BY: JRM PROJECT NO: 22-0000000	SHEET NO: 4 OF 5 TOTAL SHEETS: 5	PROJECT NO: 22-0000000 SHEET NO: 4 OF 5	PROJECT NO: 22-0000000 SHEET NO: 4 OF 5

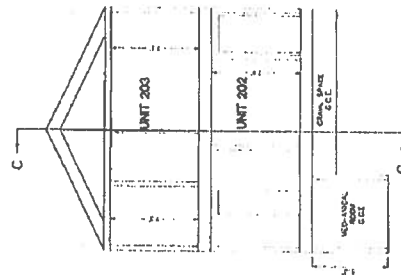


FIRST AMENDED WATER VIEW CONDOMINIUMS PLAT  
 SITUATED IN LOT 4, SECTION 31, TOWNSHIP 8 SOUTH,  
 RANGE 65 WEST, OF THE 6TH PRINCIPAL MERIDIAN  
 COUNTY OF PITKIN, STATE OF COLORADO  
 SHEET 8 OF 5

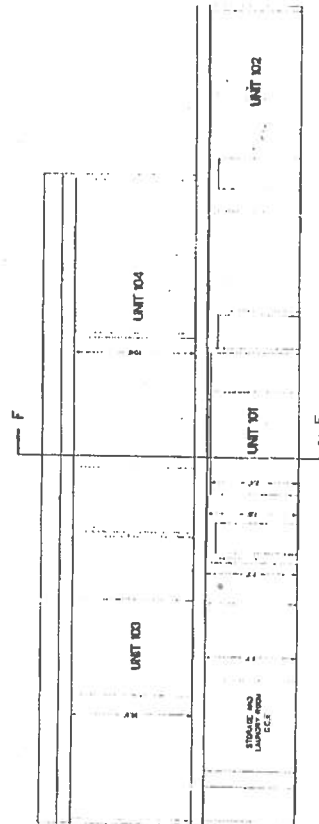
B63 P15



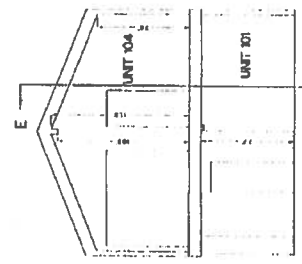
BUILDING 2  
 SECTION C-C  
 SCALE - 1/4" = 1'-0"



BUILDING 2  
 SECTION D-D  
 SCALE - 1/4" = 1'-0"



BUILDING 1  
 SECTION E-E  
 SCALE - 1/4" = 1'-0"



BUILDING 1  
 SECTION F-F  
 SCALE - 1/4" = 1'-0"

HIGH COUNT ENGINEERING, INC.  
 2001 11th Street, Suite 100, Aurora, CO 80010  
 (303) 733-1111  
 PROJECT NO. 200000001  
 SHEET 8 OF 5  
 DATE 11/11/03  
 DRAWN BY: J. H. HARRIS  
 CHECKED BY: J. H. HARRIS  
 PROJECT: WATER VIEW CONDOMINIUMS PLAT  
 SHEET: 8 OF 5  
 SCALE: AS SHOWN  
 PROJECT NO. 200000001  
 SHEET 8 OF 5  
 DATE 11/11/03



THIS PLAN IS TO BE USED FOR THE CONSTRUCTION OF THE PROJECT SHOWN HEREON. IT IS THE RESPONSIBILITY OF THE CONTRACTOR TO OBTAIN ALL NECESSARY PERMITS AND TO VERIFY THE ACCURACY OF ALL DATA AND CONDITIONS SHOWN ON THIS PLAN. THE CONTRACTOR SHALL BE RESPONSIBLE FOR OBTAINING ALL NECESSARY PERMITS AND FOR VERIFYING THE ACCURACY OF ALL DATA AND CONDITIONS SHOWN ON THIS PLAN. THE CONTRACTOR SHALL BE RESPONSIBLE FOR OBTAINING ALL NECESSARY PERMITS AND FOR VERIFYING THE ACCURACY OF ALL DATA AND CONDITIONS SHOWN ON THIS PLAN.

