



410  
 412-  
 412-

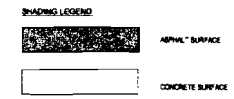
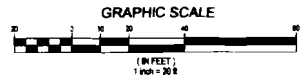
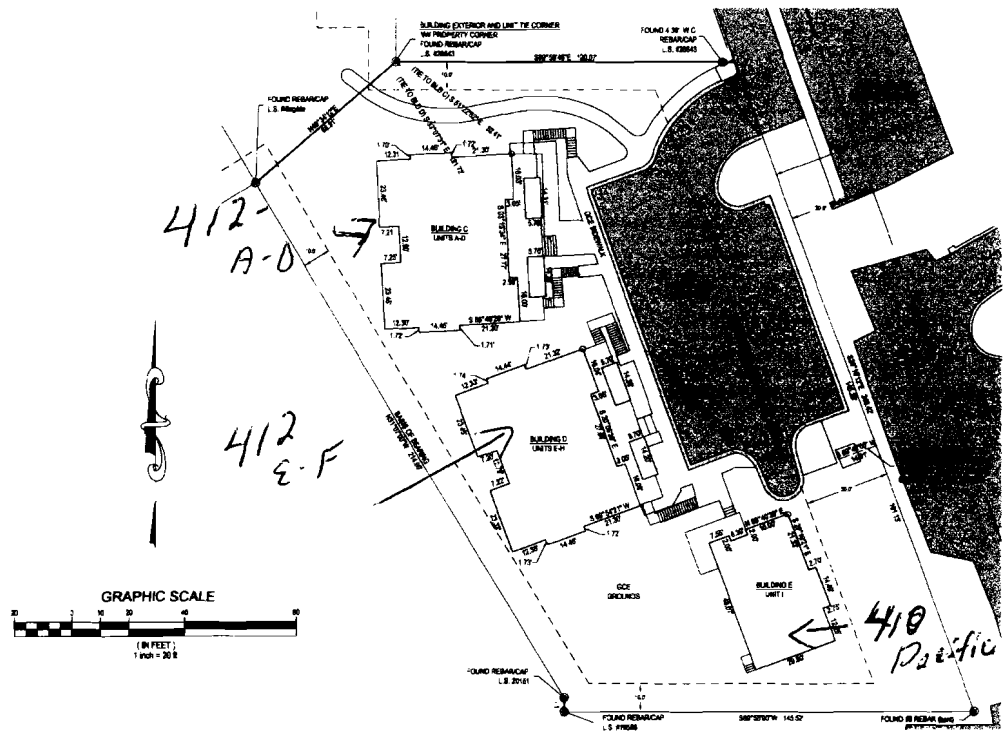
*Callan*

B89 P-20

FIRST SUPPLEMENTAL CONDOMINIUM MAP OF:  
**PACIFIC AVENUE CONDOMINIUMS**

A CONDOMINIUM COMMON INTEREST COMMUNITY LOCATED IN UNIT A, PACIFIC AVENUE CONDOMINIUMS  
 SITUATED IN THE SE1/4 OF SECTION 34 TOWNSHIP 9 SOUTH, RANGE 85 WEST OF THE 6th P.M.  
 COUNTY OF PITKIN, STATE OF COLORADO

SHEET 2 OF 10  
 EXTERIOR BOUNDARY, EXTERIOR BUILDING DIMENSIONS AND TIES



- BUILDING TABLE**
- GC - GENERAL COMMON ELEMENT
  - LCE - LIMITED COMMON ELEMENT
  - FF - FINISHED FLOOR
  - CE - CEILING
- AREAS NOT DESIGNATED WITH CONDOMINIUM UNIT, LETTERS OR AS AN L OF ANY LCE
- INTERIOR COLUMN (STRUCTURAL ELEMENTS) AND ATTACHED BUILDING UNITS, IF ANY, WITHIN A CONDOMINIUM UNIT OR LCE BOUNDARY ARE GENERAL COMMON ELEMENTS. THESE ELEMENTS, IF ANY, AND ANY INTERIOR WALLS HAVE NOT BEEN EXCLUDED FROM THE UNIT SQUARE FOOT CALCULATIONS.
- EXTERIOR BUILDING DIMENSIONS WERE MEASURED AT GROUND LEVEL.
- BUILDING C**  
 8'8 1/2" N 8° 30' 00" E NORTH-SOUTH EXTERIOR WALL BEARING (TYP.)  
 8'8 1/2" N 8° 30' 00" E NORTH-SOUTH EXTERIOR WALL BEARING (TYP.)
- BUILDING D**  
 5'0" N 8° 30' 00" E NORTH-SOUTH EXTERIOR WALL BEARING (TYP.)  
 8'8 1/2" N 8° 30' 00" E NORTH-SOUTH EXTERIOR WALL BEARING (TYP.)
- BUILDING E**  
 5'0" N 8° 30' 00" E NORTH-SOUTH EXTERIOR WALL BEARING (TYP.)  
 8'8 1/2" N 8° 30' 00" E NORTH-SOUTH EXTERIOR WALL BEARING (TYP.)

**SOPRIS ENGINEERING - LLC**  
 CIVIL CONSULTANTS  
 502 MAIN STREET, SUITE A3  
 CARBONDALE, COLORADO 81623  
 (970) 704-0311

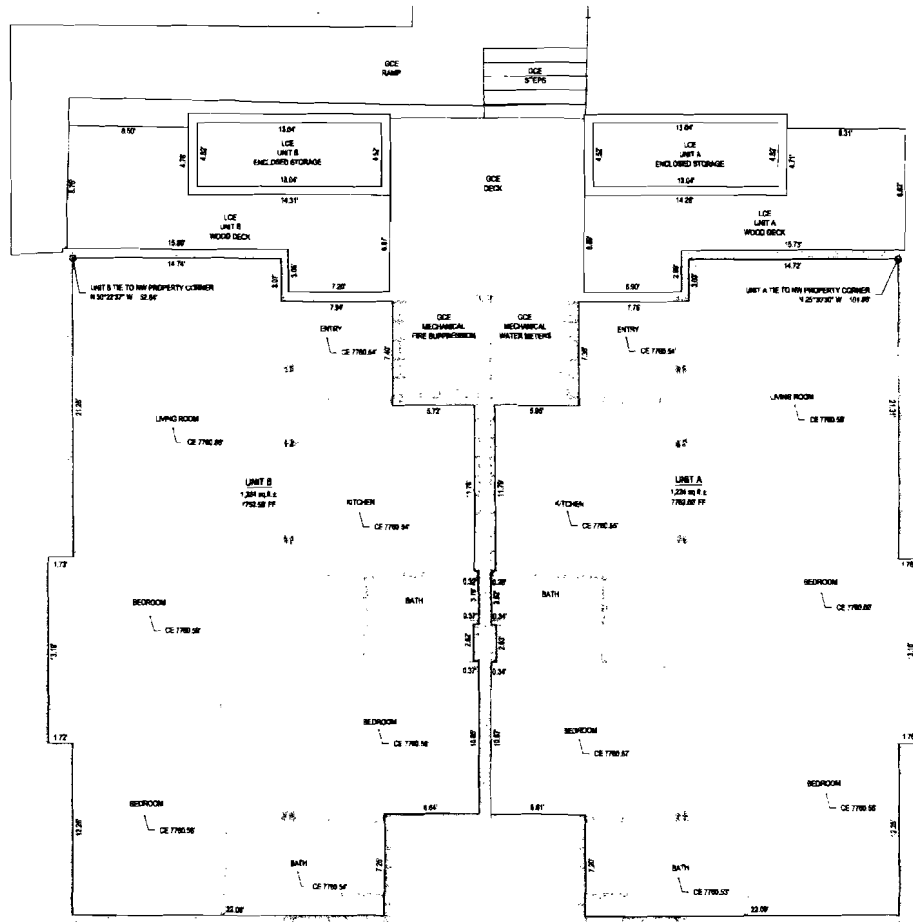
*Mark S. Bell*  
 11-11-08

REVISIONS: 254448, 11/20/2008 at 11:14:33 AM, 2 OF 10.  
 CONSULT: Pitkin County, CO PLAT NO. 08 20 20

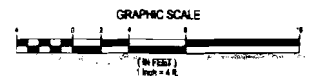
FIRST SUPPLEMENTAL CONDOMINIUM MAP OF:  
**PACIFIC AVENUE CONDOMINIUMS**  
 A CONDOMINIUM COMMON INTEREST COMMUNITY LOCATED IN UNIT A, PACIFIC AVENUE CONDOMINIUMS  
 SITUATED IN THE SE 1/4 OF SECTION 34 TOWNSHIP 9 SOUTH, RANGE 85 WEST OF THE 6th P.M.  
 COUNTY OF PITKIN, STATE OF COLORADO

B89 P-21

SHEET 3 OF 10  
 BUILDING C, MAIN LEVEL, UNITS A&B



- BUILDING TABLE**
- GC GENERAL COMMON ELEMENT
  - LCE LIMITED COMMON ELEMENT
  - FF FINISHED FLOOR
  - CE CEILING
  - AREAS NOT DESIGNATED WITH CONDOMINIUM UNIT LETTERS OR AS GC ARE GC
  - INTERIOR COLIARS, STRUCTURAL ELEMENTS AND ATTACHED BUILDING UTILITIES, IF ANY, WITHIN A CONDOMINIUM UNIT OR LCE BOUNDARY ARE GENERAL COMMON ELEMENTS. THESE ELEMENTS IF ANY, AND ANY INTERIOR WALLS HAVE NOT BEEN EXCLUDED FROM THE UNIT SQUARE FOOT CALCULATIONS.
  - BUILDING C  
 S871331E NORTH-SOUTH INTERIOR WALL BEARING (TYP.)  
 S8748297N EAST-WEST INTERIOR WALL BEARING (TYP.)
  - GENERAL NOTES**
  - PLAN VIEWS ARE FROM ARCHITECTURAL SUBMITTAL DRAWINGS UPDATED WITH ALL S.I.S. DIMENSIONS AND DEVIATION FROM DRAWING.
  - INTERIOR CONDOMINIUM UNIT DIMENSIONS ARE FROM UNFINISHED DRYWALL SURFACE TO UNFINISHED DRYWALL SURFACE.
  - INTERIOR CONDOMINIUM UNIT ELEVATIONS ARE FROM TOP OF FINISHED FLOORING TO UNFINISHED DRYWALL SURFACE OR BOTTOM STRUCTURAL BEAM.



**SOPRIS ENGINEERING - LLC**  
 CIVIL CONSULTANTS  
 502 MAIN STREET, SUITE A3  
 CARBONDALE, COLORADO 81623  
 (970) 704-0311



*Walt S. Fink*  
 11-11-08

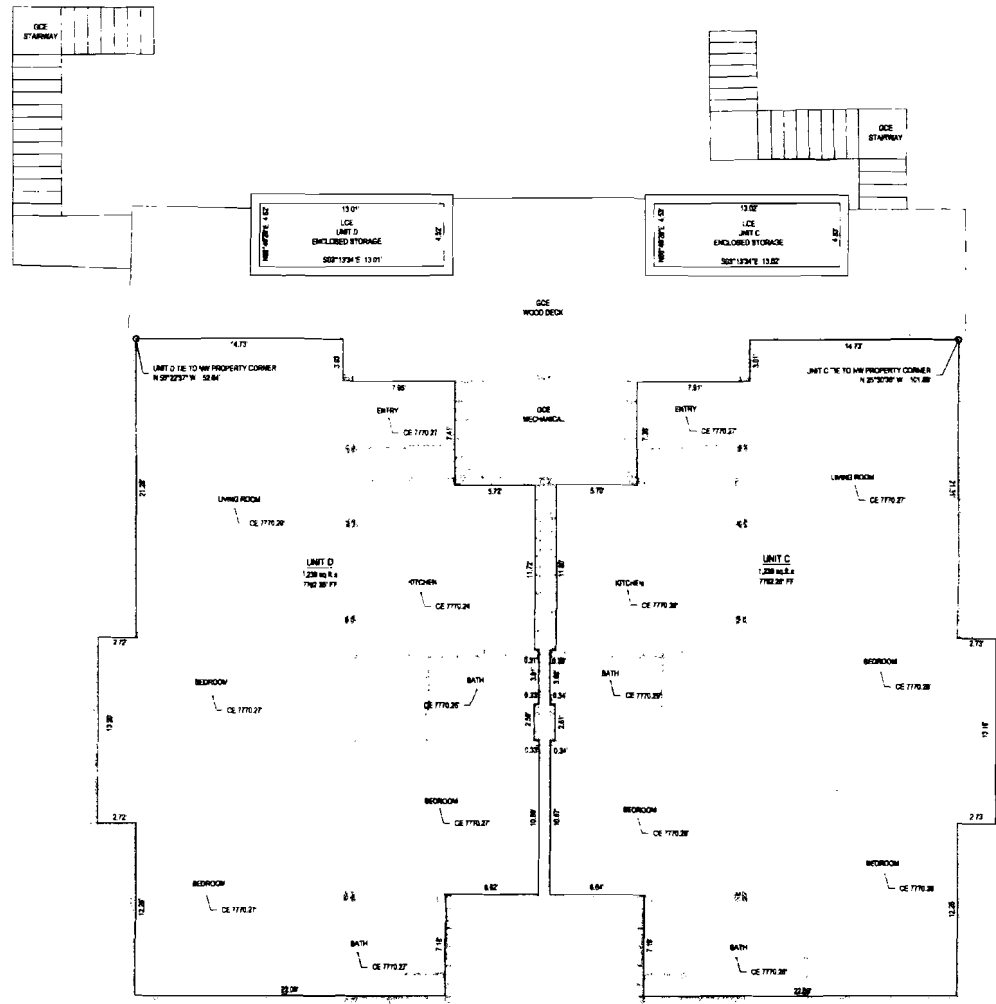
NOT FOR CONSTRUCTION TO COLORADO UNIFORM CONSTRUCTION ACT, 2008. THIS MAP IS NOT A GUARANTEE OF THE ACCURACY OF THE INFORMATION HEREIN. THE USER OF THIS MAP SHALL BE RESPONSIBLE FOR VERIFYING THE ACCURACY OF THE INFORMATION HEREIN. THE USER OF THIS MAP SHALL BE RESPONSIBLE FOR VERIFYING THE ACCURACY OF THE INFORMATION HEREIN. THE USER OF THIS MAP SHALL BE RESPONSIBLE FOR VERIFYING THE ACCURACY OF THE INFORMATION HEREIN.

FIRST SUPPLEMENTAL CONDOMINIUM MAP OF:  
**PACIFIC AVENUE CONDOMINIUMS**

A CONDOMINIUM COMMON INTEREST COMMUNITY LOCATED IN UNIT A, PACIFIC AVENUE CONDOMINIUMS  
 SITUATED IN THE SE1/4 OF SECTION 34 TOWNSHIP 9 SOUTH, RANGE 85 WEST OF THE 8th P.M.  
 COUNTY OF PITKIN, STATE OF COLORADO

B89 P-22

SHEET 4 OF 10  
 BUILDING C, UPPER LEVEL UNITS CAD



**BUILDING TABLE**

- CEE - GENERAL COMMON ELEMENT
- LEE - LIMITED COMMON ELEMENT
- FF - FINISHED FLOOR
- CE - CEILING

AREAS NOT DESIGNATED WITH CONDOMINIUM UNIT LETTERS OR AN AREA ARE CEE

INTERIOR COLUMN (STRUCTURAL ELEMENT) AND ATTACHED BUILDING UTILITIES IF ANY WITHIN A CONDOMINIUM UNIT OR UNITS BELONG TO THE GENERAL COMMON ELEMENTS. THESE ELEMENTS, IF ANY, AND ANY INTERIOR WALLS HAVE NOT BEEN EXCLUDED FROM THE UNIT SQUARE FOOT CALCULATIONS.

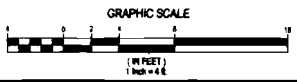
**BUILDING C**  
 SEPTER'S NORTH-SOUTH INTERIOR WALL BEARING (TY)  
 SEP-HEATH EAST-WEST INTERIOR WALL BEARING (TY)

**GENERAL NOTES**

PLAN VIEWS ARE FROM ARCHITECTURAL SUBMITTAL DRAWINGS UPDATED WITH AS-BUILT DIMENSIONS AND ELEVATION INFORMATION.

INTERIOR CONDOMINIUM UNIT DIMENSIONS ARE FROM UNFINISHED DRYWALL SURFACE TO UNFINISHED DRYWALL SURFACE.

INTERIOR CONDOMINIUM UNIT ELEVATIONS ARE FROM TOP OF FINISHED FLOORING TO UNFINISHED DRYWALL SURFACE OR BOTTOM STRUCTURAL BEAM.



**SOPRIS ENGINEERING - LLC**  
 CIVIL CONSULTANTS  
 502 MAIN STREET, SUITE A3  
 CARBONDALE, COLORADO 81623  
 (970) 704-0311



*Handwritten signature and date:*  
 11-11-02

Cowall, Pitkin County, CO STATE 80 80 80 80

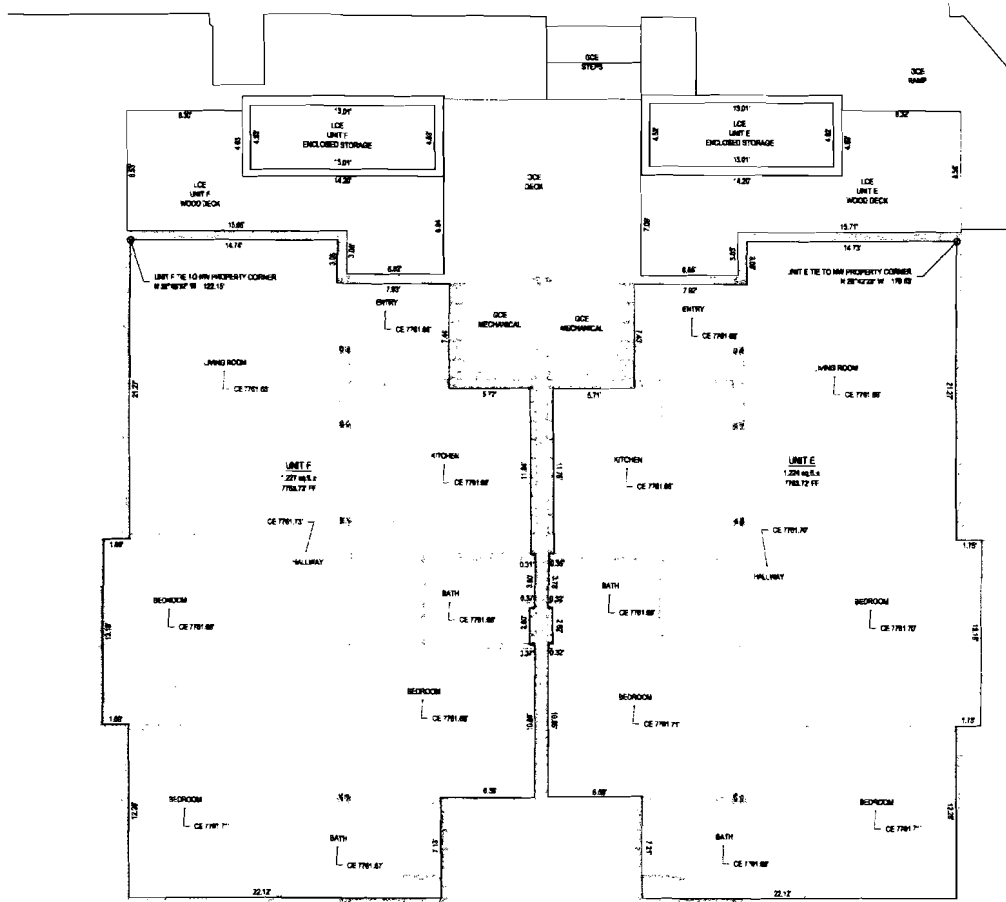
THIS PLAN IS A FIRST SUPPLEMENTAL CONDOMINIUM MAP OF THE PACIFIC AVENUE CONDOMINIUMS, A CONDOMINIUM COMMON INTEREST COMMUNITY LOCATED IN UNIT A, PACIFIC AVENUE CONDOMINIUMS, SITUATED IN THE SE1/4 OF SECTION 34 TOWNSHIP 9 SOUTH, RANGE 85 WEST OF THE 8th P.M., COUNTY OF PITKIN, STATE OF COLORADO. THIS PLAN IS SUBJECT TO THE CONDOMINIUM ACT AND THE CONDOMINIUM REGULATIONS AND BYLAWS OF THE PACIFIC AVENUE CONDOMINIUMS, A CONDOMINIUM COMMON INTEREST COMMUNITY LOCATED IN UNIT A, PACIFIC AVENUE CONDOMINIUMS, SITUATED IN THE SE1/4 OF SECTION 34 TOWNSHIP 9 SOUTH, RANGE 85 WEST OF THE 8th P.M., COUNTY OF PITKIN, STATE OF COLORADO.

FIRST SUPPLEMENTAL CONDOMINIUM MAP OF:  
**PACIFIC AVENUE CONDOMINIUMS**

A CONDOMINIUM COMMON INTEREST COMMUNITY LOCATED IN UNIT A, PACIFIC AVENUE CONDOMINIUMS  
SITUATED IN THE SE1/4 OF SECTION 34 TOWNSHIP 9 SOUTH, RANGE 85 WEST OF THE 6th P.M.  
COUNTY OF PITKIN, STATE OF COLORADO

SHEET 5 OF 10  
BUILDING D, MAIN LEVEL UNITS E&F

B89 P-23



**SOPRIS ENGINEERING - LLC**  
CIVIL CONSULTANTS  
502 MAIN STREET, SUITE A3  
CARBONDALE, COLORADO 81623  
(970) 704-0311



- BUILDING TABLE**
- CEE - GENERAL COMMON ELEMENT
  - LCE - LIMITED COMMON ELEMENT
  - FF - FINISHED FLOOR
  - CE - CEILING
- AREAS NOT DEMARCATED WITH CONDOMINIUM UNIT LETTERS OR AS AN LCE ARE CEE.
- INTERIOR COLLARS (STRUCTURAL ELEMENTS) AND ATTACHED BUILDING UTILITIES, IF ANY, WITHIN A CONDOMINIUM UNIT OR LCE BOUNDARY ARE GENERAL COMMON ELEMENTS. THESE ELEMENTS, IF ANY, AND ANY INTERIOR WALLS HAVE NOT BEEN EXCLUDED FROM THE UNIT SQUARE FOOT CALCULATIONS.
- BUILDING**
- 5' BIDDING'S NORTH-SOUTH INTERIOR WALL, RELIANT (TYP)
  - 3' BIDDING'S EAST-WEST INTERIOR WALL, RELIANT (TYP)
- GENERAL NOTES**
- PLAN VIEWS AND FLOOR ARCHITECTURAL ELEMENTS DRAWINGS UPDATED WITH AIR-SEAL, OPERABILITY AND ELEVATION INFORMATION.
  - INTERIOR CONDOMINIUM UNIT DIMENSIONS ARE FROM UNFINISHED DRYWALL SURFACE TO UNFINISHED DRYWALL SURFACE.
  - INTERIOR CONDOMINIUM UNIT SQUARE FOOTAGE IS FROM TOP OF FINISHED FLOORING TO UNFINISHED DRYWALL SURFACE EXCEPT FOR STRUCTURAL BEAM CALCULATIONS.

*Handwritten signature:* Mike S. Bell  
1/14/05

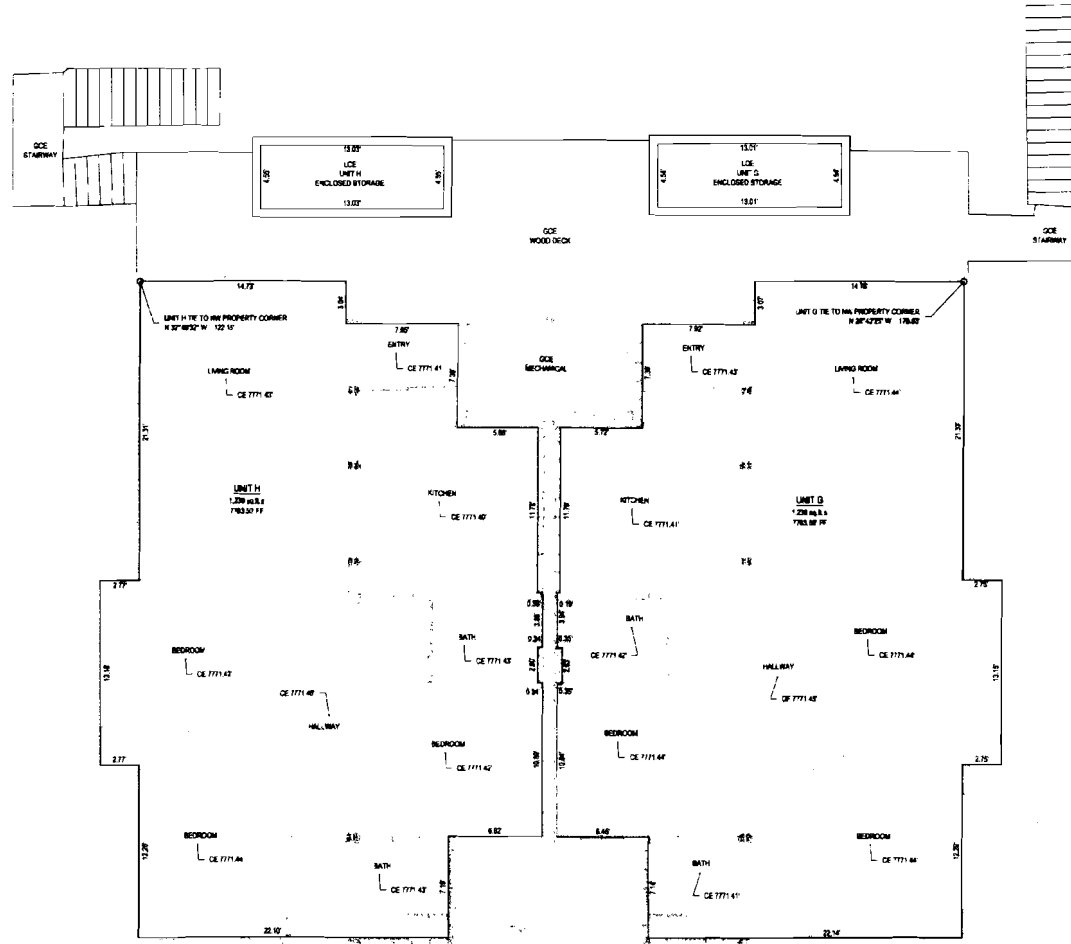
THIS DOCUMENT IS THE PROPERTY OF SOPRIS ENGINEERING - LLC. IT IS TO BE USED ONLY FOR THE PROJECT AND SITE SPECIFICALLY IDENTIFIED HEREIN. IT IS NOT TO BE REPRODUCED, COPIED, OR TRANSMITTED IN ANY FORM OR BY ANY MEANS, ELECTRONIC OR MECHANICAL, INCLUDING PHOTOCOPYING, RECORDING, OR BY ANY INFORMATION STORAGE AND RETRIEVAL SYSTEM, WITHOUT THE WRITTEN PERMISSION OF SOPRIS ENGINEERING - LLC.

FIRST SUPPLEMENTAL CONDOMINIUM MAP OF:  
**PACIFIC AVENUE CONDOMINIUMS**

A CONDOMINIUM COMMON INTEREST COMMUNITY LOCATED IN UNIT A, PACIFIC AVENUE CONDOMINIUMS  
 SITUATED IN THE SE1/4 OF SECTION 34 TOWNSHIP 9 SOUTH, RANGE 85 WEST OF THE 6th P.M.  
 COUNTY OF PITKIN, STATE OF COLORADO

SHEET 8 OF 10  
 BUILDING D, UPPER LEVEL UNITS 04H

*B89 P-24*



**BUILDING TABLE**

04H - GENERAL COMMON ELEMENT  
 LCE - LIMITED COMMON ELEMENT  
 FF - FINISHED FLOOR  
 CE - CEILING

AREAS NOT DESIGNATED WITH CONDOMINIUM UNIT LETTERS OR AN LCE ARE 04H

INTERIOR COLUMNS (STRUCTURAL ELEMENTS) AND ATTACHED BUILDING  
 FILTERS, IF ANY, WITHIN A CONDOMINIUM UNIT OR LCE BOUNDARY ARE  
 GENERAL COMMON ELEMENTS. THESE ELEMENTS, IF ANY, AND ANY INTERIOR  
 WALLS HAVE NOT BEEN EXCLUDED FROM THE UNIT SQUARE FOOT  
 CALCULATIONS.

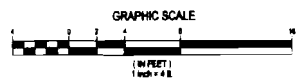
**BUILDING D**  
 8'00" x 6" NORTH-SOUTH; INTERIOR WALL BEARING (TYP)  
 8'00" x 6" EAST-WEST; INTERIOR WALL BEARING (TYP)

**GENERAL NOTES**

IF AN ITEM IS FROM ARCHITECTURAL SUBMITTAL, DIMENSIONS UPDATED WITH  
 AS-BUILT DIMENSIONS AND ELEVATION INFORMATION.

INTERIOR CONDOMINIUM UNIT DIMENSIONS ARE FROM UNFINISHED DRYWALL  
 SURFACE TO UNFINISHED DRYWALL SURFACE.

INTERIOR CONDOMINIUM UNIT ELEVATIONS ARE FROM TOP OF FINISHED  
 FLOORING TO UNFINISHED DRYWALL SURFACE OR BOTTOM STRUCTURAL BEAM.



**SOPRIS ENGINEERING - LLC**  
 CIVIL CONSULTANTS  
 502 MAIN STREET, SUITE A3  
 CARBONDALE, COLORADO 81623  
 (970) 704-0311

*Mark S. [Signature]*  
 11/11/08

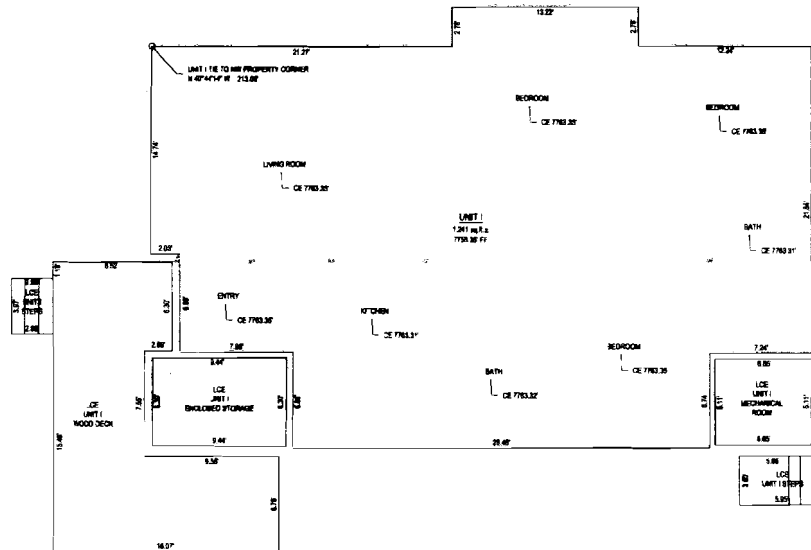
NOTICE: ACCORDING TO COLORADO LAW YOU MUST EXERCISE YOUR RIGHTS AND OBLIGATIONS UNDER THIS DOCUMENT AS TO THE PROPERTY INTERESTS INVOLVED. THIS DOCUMENT IS NOT A CONTRACT AND DOES NOT CONSTITUTE AN OFFER. IT IS A LEGAL INSTRUMENT AND SHOULD BE READ CAREFULLY AND UNDERSTOOD BEFORE SIGNING IT. IF YOU DO NOT UNDERSTAND THIS DOCUMENT, YOU SHOULD CONSULT WITH A LAWYER BEFORE SIGNING IT.

FIRST SUPPLEMENTAL CONDOMINIUM MAP OF:  
**PACIFIC AVENUE CONDOMINIUMS**

A CONDOMINIUM COMMON INTEREST COMMUNITY LOCATED IN UNIT A, PACIFIC AVENUE CONDOMINIUMS  
 SITUATED IN THE SE 1/4 OF SECTION 34 TOWNSHIP 9 SOUTH, RANGE 85 WEST OF THE 6th P.M.  
 COUNTY OF PITKIN, STATE OF COLORADO

SHEET 7 OF 10  
 BUILDING E. UNIT 1

B 89 P-25



**BUILDING TABLE**

GC - GENERAL COMMON ELEMENT  
 LC - LIMITED COMMON ELEMENT  
 FF - FINISHED FLOOR  
 CE - CEILING

AREAS NOT DESIGNATED WITH CONDOMINIUM UNIT LETTERS OR AN "LC" ARE GC

INTERIOR COLLARS (STRUCTURAL ELEMENTS) AND ATTACHED BUILDING UTILITIES IF ANY WITHIN A CONDOMINIUM UNIT OR LCE BOUNDARY ARE GENERAL COMMON ELEMENTS. THESE ELEMENTS IF ANY AND ANY INTERIOR WALLS HAVE NOT BEEN EXCLUDED FROM THE UNIT SQUARE FOOT CALCULATIONS.

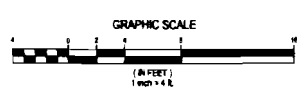
**BUILDING E**  
 8' 20" WIDE NORTH-SOUTH INTERIOR WALL BEARING (TYP.)  
 6' 0" WIDE EAST-WEST INTERIOR WALL BEARING (TYP.)

**GENERAL NOTES**

PLAN VIEWS ARE FROM ARCHITECTURAL. SUBMITTAL DRAWINGS UPDATED WITH AS-BUILT DIMENSIONS AND ELEVATION INFORMATION.

INTERIOR CONDOMINIUM UNIT DIMENSIONS ARE FROM UNFINISHED DRYWALL SURFACE TO UNFINISHED DRYWALL SURFACE.

INTERIOR CONDOMINIUM UNIT ELEVATIONS ARE FROM TOP OF FINISHED FLOORING TO UNFINISHED DRYWALL SURFACE OR BOTTOM STRUCTURAL SLAB.



**SOPRIS ENGINEERING - LLC**  
 CIVIL CONSULTANTS  
 502 MANN STREET, SUITE A3  
 CARBONDALE, COLORADO 81623  
 (970) 704-0311

*Handwritten signature and date: 11-11-08*

CONDOMINIUM MAP OF PACIFIC AVENUE CONDOMINIUMS, SHEET 7 OF 10, COUNTY OF PITKIN, STATE OF COLORADO

NOTES: REFER TO SUBMITTAL DRAWINGS FOR ALL DIMENSIONS AND ELEVATIONS. THIS MAP IS A SUPPLEMENTAL MAP TO THE ORIGINAL CONDOMINIUM MAP AND IS NOT TO BE USED TO DETERMINE THE EXACT BOUNDARIES OF THE CONDOMINIUMS. THE DIMENSIONS AND ELEVATIONS SHOWN ON THIS MAP ARE FOR INFORMATIONAL PURPOSES ONLY AND DO NOT CONSTITUTE A WARRANTY OF ANY KIND. THE DIMENSIONS AND ELEVATIONS SHOWN ON THIS MAP ARE FOR INFORMATIONAL PURPOSES ONLY AND DO NOT CONSTITUTE A WARRANTY OF ANY KIND.

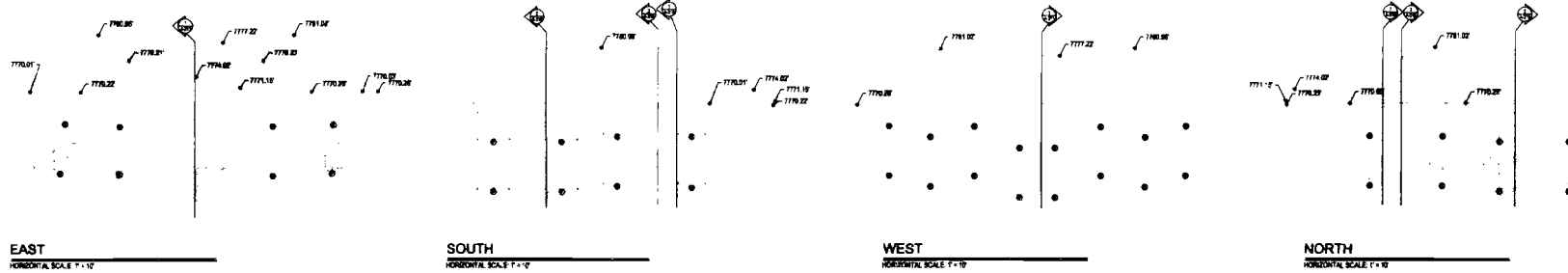
FIRST SUPPLEMENTAL CONDOMINIUM MAP OF:  
**PACIFIC AVENUE CONDOMINIUMS**

A CONDOMINIUM COMMON INTEREST COMMUNITY LOCATED IN UNIT A, PACIFIC AVENUE CONDOMINIUMS  
 SITUATED IN THE SE1/4 OF SECTION 34 TOWNSHIP 9 SOUTH, RANGE 85 WEST OF THE 8th P.M.  
 COUNTY OF PITKIN, STATE OF COLORADO

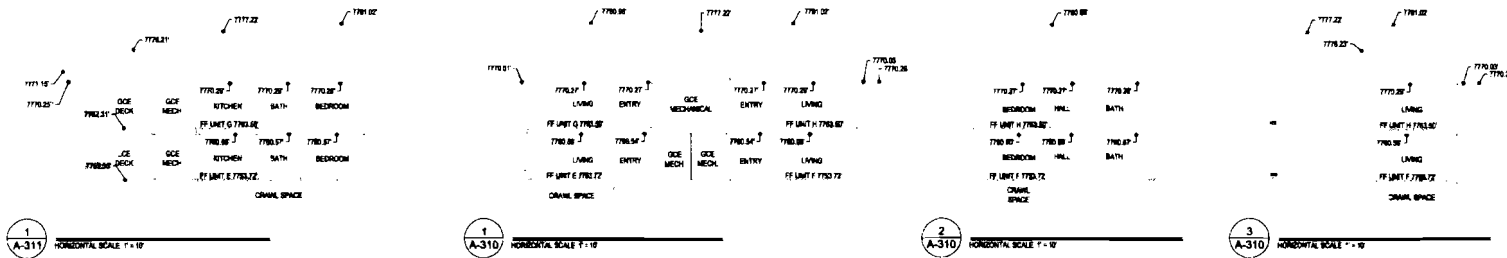
B89 P-26

SHEET 8 OF 10  
 BUILDING C ELEVATION VIEWS AND CROSS SECTIONS

**BUILDING C ELEVATION VIEWS**



**BUILDING C CROSS SECTIONS**



**SOPRIS ENGINEERING - LLC**  
 CIVIL CONSULTANTS  
 502 MAIN STREET, SUITE A3  
 CARBONDALE, COLORADO 81623  
 (970) 704-0311

*Handwritten signature and date:*  
 11-11-08

2008.11.11 11:11:33 AM 8 OF 10  
 CONSULTANT: [unclear] 08/11/08 08:11:33 AM

NOTICE: ACCORDING TO COLORADO LAW THIS PLAN IS VALID FOR THE DESIGN AND CONSTRUCTION OF THE PROJECT ONLY. IT IS NOT VALID FOR ANY OTHER PURPOSES. THE CLIENT IS RESPONSIBLE FOR OBTAINING ALL NECESSARY PERMITS AND APPROVALS FROM THE LOCAL, STATE AND FEDERAL AUTHORITIES. THE ENGINEER'S LIABILITY IS LIMITED TO THE DESIGN AND CONSTRUCTION OF THE PROJECT ONLY. THE ENGINEER DOES NOT WARRANT THE ACCURACY OF THE INFORMATION PROVIDED HEREON.



FIRST SUPPLEMENTAL CONDOMINIUM MAP OF:  
**PACIFIC AVENUE CONDOMINIUMS**

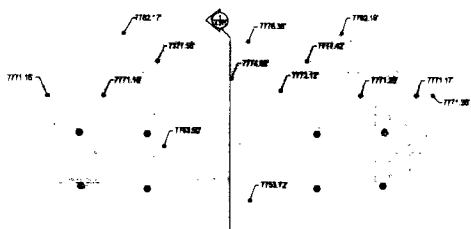
A CONDOMINIUM COMMON INTEREST COMMUNITY LOCATED IN UNIT A, PACIFIC AVENUE CONDOMINIUMS  
 SITUATED IN THE SE1/4 OF SECTION 34 TOWNSHIP 9 SOUTH, RANGE 85 WEST OF THE 6th P.M.  
 COUNTY OF PITKIN, STATE OF COLORADO

*B89 P.27*

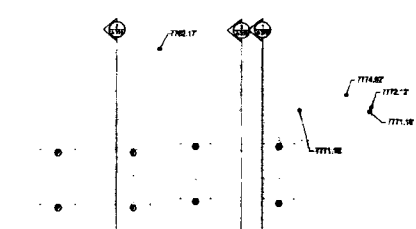
SHEET 9 OF 10

BUILDING D ELEVATION VIEWS AND CROSS SECTIONS

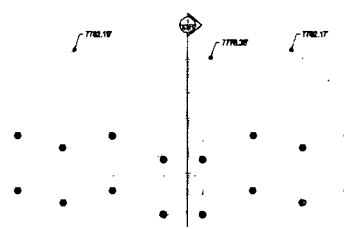
**BUILDING D ELEVATION VIEWS**



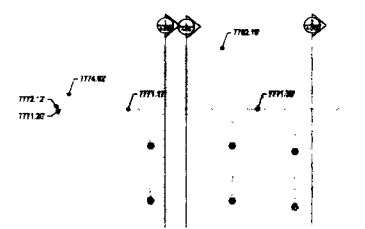
**EAST**  
 HORIZONTAL SCALE 1" = 10'



**SOUTH**  
 HORIZONTAL SCALE 1" = 10'

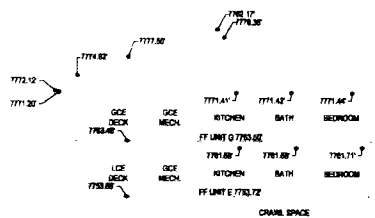


**WEST**  
 HORIZONTAL SCALE 1" = 10'

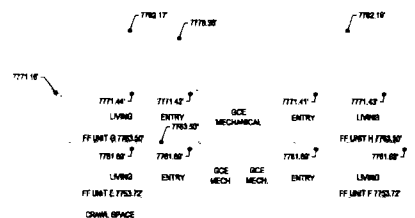


**NORTH**  
 HORIZONTAL SCALE 1" = 10'

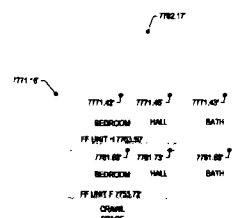
**BUILDING D CROSS SECTIONS**



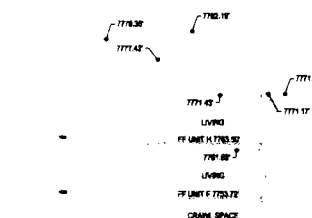
**1**  
**A-311**  
 HORIZONTAL SCALE 1" = 10'



**2**  
**A-310**  
 HORIZONTAL SCALE 1" = 10'



**3**  
**A-310**  
 HORIZONTAL SCALE 1" = 10'



**3**  
**A-310**  
 HORIZONTAL SCALE 1" = 10'

**SOPRIS ENGINEERING - LLC**  
 CIVIL CONSULTANTS  
 502 MAIN STREET, SUITE A3  
 CARBONDALE, COLORADO 81623  
 (970) 704-0311

*Handwritten signature and date: 11-11-08*

3. SOURCE: LAM YU, HUI, CHANG & WU, LLP  
 4. THIS IS THE SHOWN UNIT NUMBER  
 5. THIS IS THE SHOWN UNIT NUMBER  
 6. THIS IS THE SHOWN UNIT NUMBER  
 7. THIS IS THE SHOWN UNIT NUMBER  
 8. THIS IS THE SHOWN UNIT NUMBER  
 9. THIS IS THE SHOWN UNIT NUMBER  
 10. THIS IS THE SHOWN UNIT NUMBER

