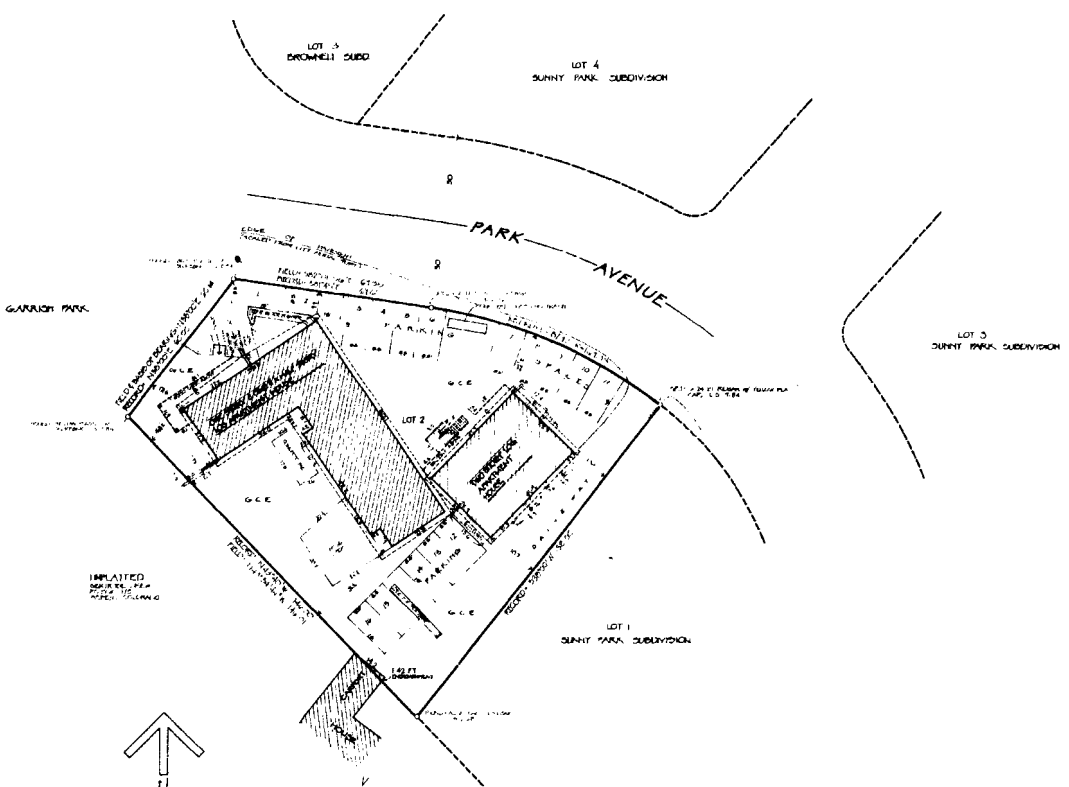


Book 12 P. 59

Book 12 P. 59

MARTHINSSON NOSTDAHL CONDOMINIUMS

LOT 2 SUNNY PARK SUBDIVISION



IMPLANTED
REAR DRIVE
W/ 10' SIDEWALK



0 10 20 30 40 50
FOOT

SCALE: 1"=40'
WORKSHEET: 1/25/84

ALPINE SURVEYS
P.O. BOX 1136
AURORA, COLORADO 80016
800 762 2800
SURVEYED: 6/22/84 BY
DRAFTED: 6/27/84 BY
CLIENT: MARTHINSSON NOSTDAHL
JOB NUMBER: 11-8

OWNERS CERTIFICATE

MARGE NOSTDAHL AND ANNE MARTHINSSON, AS OWNERS, IN FREE SAMPLE, OF LOT 2 SUNNY PARK SUBDIVISION, CITY OF ASPEN, PITKIN COUNTY, COLORADO, HEREBY CERTIFY THAT THIS MAP OF MARTHINSSON NOSTDAHL CONDOMINIUMS HAS BEEN PREPARED IN ACCORDANCE WITH THE PLANNING AND ZONING ORDINANCES AND RECORDS IN BOOK 12, PAGE 59 OF THE RECORDS OF PITKIN COUNTY, COLORADO.

Marge Nostdahl
MARGE NOSTDAHL
Anne Marthinson
ANNE MARTHINSSON

STATE OF COLORADO) S.S.
COUNTY OF PITKIN)

THE FOREGOING OWNERS CERTIFICATE WAS ACKNOWLEDGED BEFORE ME THIS 17th DAY OF SEPTEMBER, 1984, BY MARGE NOSTDAHL AND ANNE MARTHINSSON, WITNESS MY HAND AND OFFICIAL SEAL, MY COMMISSION EXPIRES 3/31/85

Lesly Kenning
NOTARY PUBLIC
220 E. HARRIS
ASPEO, CO 81611

SURVEYORS CERTIFICATE

I, JAMES F. REZER, A REGISTERED LAND SURVEYOR, HEREBY CERTIFY THAT THIS MAP REPRESENTS AN ACTUAL FIELD SURVEY PERFORMED UNDER MY DIRECTION AND SUPERVISION IN JUNE, 1984, OF LOT 2, SUNNY PARK SUBDIVISION, CITY OF ASPEN, PITKIN COUNTY, COLORADO, AND THAT THE SPILT LEVEL, ONE BERRY AND THREE SEVEN WOOD AND CONCRETE BUILDINGS WERE FOUND TO BE LOCATED ENTIRELY WITHIN THE DELINEATED LINES OF SAID LOT 2, AS SHOWN THEREON. THE LOCATION AND DIMENSIONS OF THE BOUNDARY LINES, BUILDINGS, IMPROVEMENTS, EASEMENTS, RIGHTS-OF-WAY OR EASEMENTS OR INTERFERE TO THEM, AND ENCROACHMENTS BY OR ON THESE PREMISES ARE ACCURATELY SHOWN ON THIS MAP, AND THE MAP ACCURATELY AND SUBSTANTIALLY DEPICTS THE LOCATION AND THE HORIZONTAL AND VERTICAL MEASUREMENTS OF THE BUILDINGS, THE CONDOMINIUM UNITS THEREIN, THE LIMITS OF "COMMON" AREAS UNDER THE PROVISIONS PROVIDED FOR BY THE OWNERS, THE DIMENSIONS OF SAID UNITS AND THE ELEVATIONS OF THE FLOORS AND CEILING.

James F. Rezer
JAMES F. REZER, 1984

EXECUTED THE 16th DAY OF DATE 1984

CITY OF ASPEN CONDOMINIUM APPROVAL

THIS CONDOMINIUM MAP OF MARTHINSSON NOSTDAHL CONDOMINIUMS WAS APPROVED BY THE CITY COUNCIL OF THE CITY OF ASPEN, COLORADO, THIS 16th DAY OF JANUARY, 1984.

Thomas Heibel
THERMAN HEIBEL, JUNIOR
CITY CLERK

CITY ENGINEERS CONDOMINIUM APPROVAL

THIS CONDOMINIUM MAP OF MARTHINSSON NOSTDAHL CONDOMINIUMS WAS APPROVED BY THE CITY ENGINEERS OF THE CITY OF ASPEN, COLORADO, THIS 6th DAY OF JANUARY, 1984.

Donald McEach
CITY ENGINEER

PLANNING & ZONING COMMISSION APPROVAL

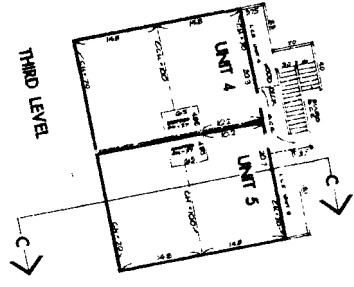
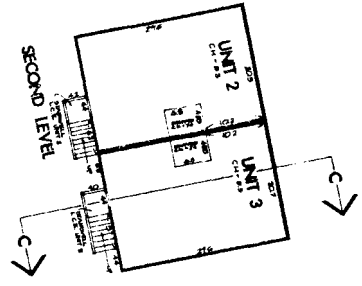
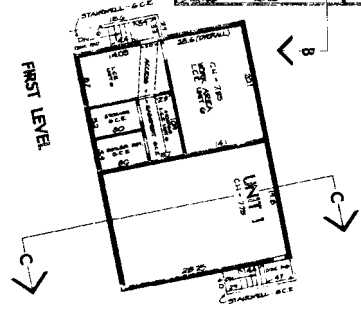
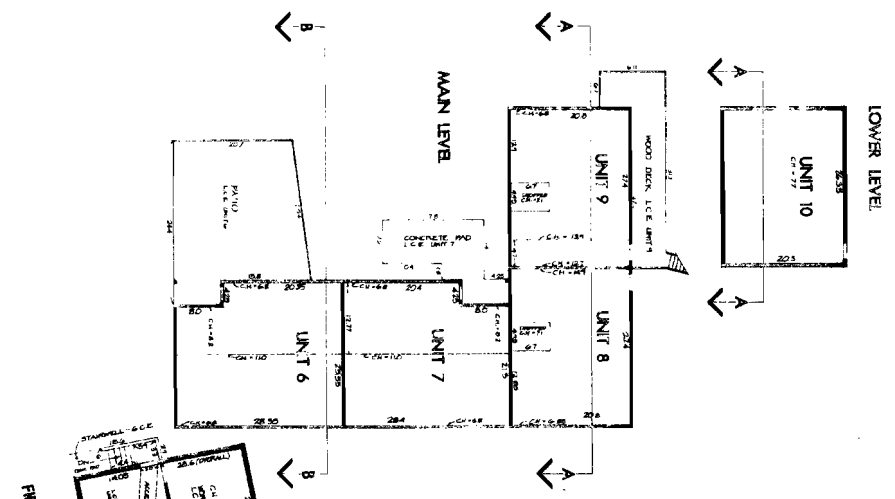
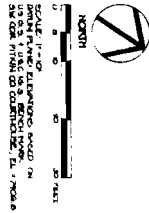
THIS CONDOMINIUM MAP OF MARTHINSSON NOSTDAHL CONDOMINIUMS WAS APPROVED BY THE CITY OF ASPEN PLANNING & ZONING COMMISSION THIS 16th DAY OF JANUARY, 1984.

John J. Flannery
CHAIRMAN

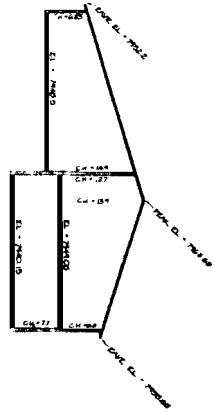
CLERK & RECORDERS CERTIFICATE

THIS CONDOMINIUM MAP OF MARTHINSSON NOSTDAHL CONDOMINIUMS WAS ACCEPTED FOR FILING IN THE OFFICE OF THE CLERK AND RECORDERS OF THE COUNTY OF PITKIN, STATE OF COLORADO, JULY 23, 1984, THIS 23rd DAY OF JULY, 1984, AND WAS TRULY FILED IN BOOK 12, AT PAGE 59, RECEPTION NO. 201630, 258633.

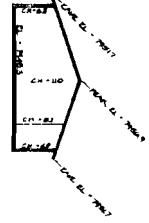
Lesly Kenning
CLERK & RECORDERS



SECTION AA



SECTION BB



SECTION CC

